



# A Gathering of Lace

34 lace knitters share their secrets and projects

## Corrections & Clarifications

### First Printing 2000

#### Page 16 Faux Russian Stole

The Center Motif Chart:

Rows 55, 63 & 79:

The center sl 1-k2tog-*psso* symbol (square 41) should be shifted down to the previous chart row 53, 61 & 77 respectively.

Row 77:

Square 33 should be a *k2tog* (right before the yo), and square 49 should be an *ssk* (right after the yo).

#### Page 18 Cocoon

It is clearer for the Chart Note to read:

Chart shows odd-numbered rows only.

K even-numbered rows, working *k1-p1* in each double yo on following row.

#### Page 22 Shaped Triangle

First paragraph, 4th line should read:

...reading from *left to right*,...

Rows 147-153:

Changes shown on chart below.

Rows 175-179:

Need to have the rep lines (section C) moved out 2 squares on each side, making it a 12-st rep as stated.

Row 187, section C:

The *k2tog* and *ssk* should both be *knit* sts.

Lace Edging Chart:

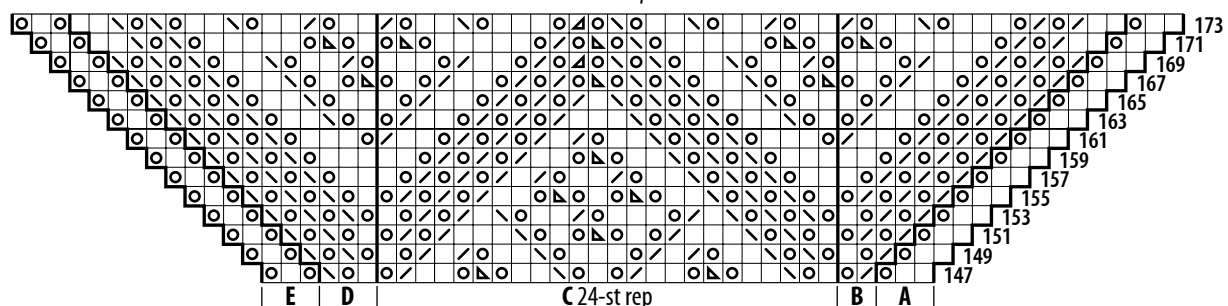
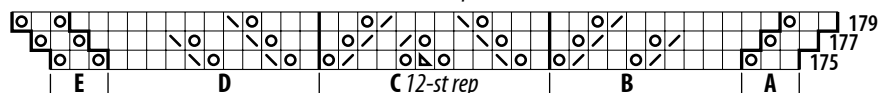
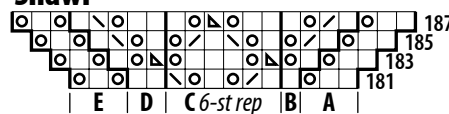
On every row 7, the *k2tog* after the first yo should be a *knit* stitch. It would then read: Sl 1 purlwise wyib, *k2*, yo, *k3*, yo, *k2tog*,...

Also, the Lace edging is worked in Garter st, which is not indicated on the chart.

Therefore, work every "white" square on Lace edging chart as knit, whether on RS or WS.

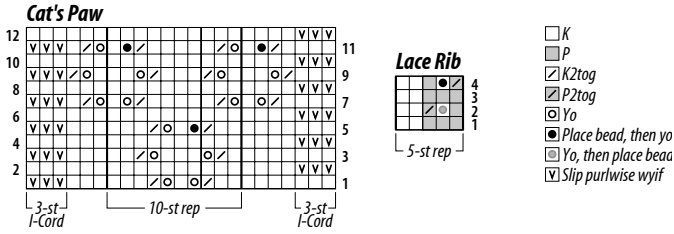
All corrected charts are shown below.

### Shawl



## Page 28 Bejeweled Cat's Paws

The color on the charts and key slipped off the page! Below are the corrected charts and key.



## Page 32-35 Faroese Shawl

The next to the last line of the third paragraph should read:  
...through row 192...

On page 34, there is a missing decrease in the *Side Panel Chart*. On Row 49, the 3rd square from the left should be an *Ssk*.

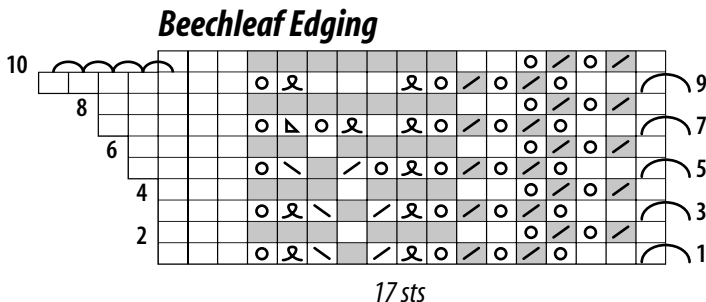
## Page 40 Shetland Tea Shawl

The Diamond Madeira chart is incorrect: In order to keep the pattern aligned, move the marker 1 st to the right on rnds 11, 24, 26, 28, 30, 32, 34, & 36.

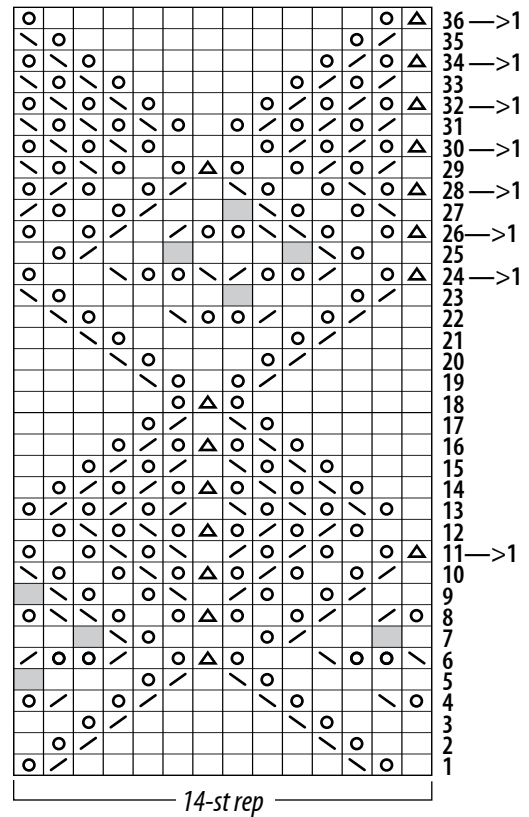
Beechleaf Edging chart:

Has 2 rows reversed. Rows 2 and 4 should both read (reading from left to right): *K3, p3, k1, p3, k2, [yo, p2tog] twice, k1...*

The corrected charts & key follow.



## Diamond Madeira



## Page 42 Sampler Stole

The following squares should be:

Row 42:

First 3 squares from R: *k1, k2tog, yo.*

Row 45:

6th -8th squares from R: *k1, yo, k2tog*, 4th square from L: *knit.*

Row 49:

3rd square from R: *knit.*

Row 75:

1st square from R: *knit.*

Row 79:

4th square from L: *k2tog*.

Row 93:

1st square from R and 2nd square from L:  
*k2tog*.

Row 159:

6th and 7th squares from R: *k2tog*, *yo*, 6th  
square from L: *k2tog*, 7th square from L:  
*yo*...

Second Border, starting with the 2nd line,  
it should read:

Continue to work as for first border. Break  
yarn. Work either the knitted-on edging or  
the separate, sewn-on edging.

## Page 52

Border Chart, row 66:

Third round cluster worked should read:  
*yo*, *k2tog*, *yo*, *sl1-k2tog-pssso*, *yo*.

## Page 53

Border Chart, row 6:

Last section worked with *yos* should read:  
*yo*, *k2tog*, *k*, *k2tog*, *yo*, *k3*, *yo*, *k2tog*, *k*,  
*k2tog*, *yo*.

## Page 56-58 Feather & Fan Shawl

Shawl:

The second line from the bottom should  
read:

For the blue shawl, work 24 reps of 2B  
around.

Chart 2B, rnd 61 should be:

*Yo*, *k4*, *k2tog*, *k3*, *yo*, *k1*. (This adds an  
extra “knit” square, and the *ssk* becomes  
a knit.) This also adds an extra “knit”  
square to rnd 63. Below are those 2 chart  
rnds.



## Page 60 Frost Flowers & Leaves

Chart rnd 51:

The 27th square from R (not counting the  
“no st” squares) should be an *ssk* (right af-  
ter the *yo*, before the first *k1-p1* into 1 st).

Chart rnd 62:

The 22nd square from R and 19th square  
from L (not counting the “no st” squares)  
should be a *no st* square.

Chart rnd 78:

19th square from L (not counting the  
“no st” squares) should also be a *no st*  
square.

## Page 62-65 Mediterranean Lace

The yarn is *Cobweb-weight*. The put-up is  
 $\frac{1}{2}$  oz/14g; and it uses 16 skeins.

Chart A, Part 2:

Row 244:

The 4th square from R and 4th square  
from L should be a *yo* for row 244, but  
when working rows 288, 332 & 276, these  
squares should be *k2tog*.

Row 248:

4th square from L: *k2tog*.

Row 250:

4th square from R and 4th square from L:  
*knit*.

Row 264:

4th square from R and 4th square from L:  
*sl 1-k2tog-pssso*.

Row 270:

4th square from L: *k2tog*.

Row 272:

First 4 squares from R: *k1*, *ssk*, *yo*, *ssk*,  
4th square from L: *ssk*.

Row 274:

4th square from R and L: *knit*.

## Page 68-71 Ingrid's Bridal Knot

Heart Instructions, rnd 7 should read:

*K1, sl 6 yo's wyif, yo, k1.*

Page 69, Border set-up, rnd 1:

Here is a clarification: Work to final st on last section, yo, knit last st and sl back to LH needle. Bring yarn over LH needle to front (creating a duplicate yo), sl yo and next st (from crown pat) from RH needle to LH needle. Bring yarn between the 2 needles and to the back (wrapping yo and crown st), sl crown st as if to knit back to RH needle. (Final crown st has been wrapped and beginning of rnd has been moved to match beginning of chart).

### Page 70:

Row 69:

28th square from R: *yo.*

Row 83:

7th square from R: *yo.*

Row 183:

6th square from R: *k in back of st.*

Row 209:

22nd square from L: *yo.*

Row 237:

42nd square from R: *yo.*

### Page 71:

Row 141:

2nd square from L: *k in back of st.*

Row 209:

15th square from L: *yo.*

Row 237:

58th square from R: *yo.*

Row 237:

29th square from L: *yo.*

## Page 74 Magikal Earth Shawl

The yarn amount was left out! 4-6 oz should be enough, 8 oz would let you rest assured.

Edging chart:

On the first square at the left edge, on rows A, 4, 20, 32, & 36 the horizontal bar that is part of the "slip purllwise wyif" symbol migrated over to the next square!

## Page 80 Spiral Shawl

Shawl:

The very last sentence should read: Do not break yarn if working Cream edging.

## Page 82 Super-Spiral Shawl

Border Chart, first rnd:

The 6th square from the right should be a *k2tog*, making Rnd 1 [K5, k2tog] twice.

## Page 89 Roseleaves Tunic

Lace Chart, rnd 15:

The last square of the rep is worked as stated except on the very last rep, when it is worked as *no stitch*. So work that rnd as charted, then when you get to the last 2 sts of the rnd, skip that square on the chart and k last 2 sts tog.

## Page 90 Sampler Tabard

English Mesh Lace:

When working, move marker 1 st to left at beg of every chart rnd 8. Because of this, it is better to not place second side marker until the first rnd of Fir Cone II in order to keep the number of sts the same on front and back.

Faggoting chart, row 2:

The last st should be a *p2tog*. The symbol should slant the other direction to match the symbol in the key.

### **Page 102 Short-row Pullover**

Back, row 37 for Sizes S, L, and XXL:  
An s was omitted from ssk.

### **Page 108 Rose Lace Vest**

Fronts:

The note about winding off yarn for the right front is incorrect. Instead of winding off 60 yds for the XL, wind off approx  $1\frac{1}{4}$  ( $1\frac{1}{2}$ ,  $1\frac{3}{4}$ ) oz, or about 350 (440, 500) yds.

### **Page 112 Vine Lace Cardigan**

Row 31:

Stitches 6 & 7 should be a  $1/1RT$ . The yarn originally used in this design was discontinued before the book was published. The yarn that was substituted was considered dk-weight by the yarn company. But, it is closer to a sport-weight yarn, making it easier to get the recommended gauge.

### **Page 139 Lace Cuffed Socks**

Gauge:

The Medium sock is 36 sts and 50 rnds to 4" using size 0 needle.

The Large sock is 36 sts and 50 rnds to 4" using size 1 needle.

### **Page 144 Picture Hat**

Rnds 71, 75 & 79:

The marker should be moved 1 st to the right instead of left. Work as follows: do not work last st of previous rnd, move marker to the right 1 st (making the last st of the previous rnd the first st of the next rnd).

### **Page 148 Classic Pinafore**

Pinafore chart:

Row 2:

The k3tog (2nd square inside the rep) should be a  $k2tog$  and the sssk (the next to the last square of the rep) should be an ssk.

Rows 9, 11 & 13:

Counting from right to left, square 14 (gray square) needs to move 1 square to the right and square 35 (gray square) needs to move 1 square to the left. Moving those sts out 1 square lines them up with a yo on row 14.

### **Page 150 A Pair of Pillows**

Catspaw charts I & II, Row 38:

The 15th st from the right for Catspaw 1, and the 14th st from the left on Catspaw II, should be a *k in back of st* instead of an ssk.

### **Page 161 Gallery**

Spanish Peacock chart:

Rnd 64, after rnd 60, should be 61.

## **6TH PRINTING**

**Page 8**, 4th paragraph, first line has an extra "work", it needs to be eliminated.

### **Page 12 Body chart**

*Even rows 2-24* need to have last 3 sts (on left side) shaded.

### **Page 26 Chart A**

Row 7, stitches 16 & 17 need to be switched. The  $k2tog$  should come before the yo.

## **Page 65 Chart A, Part 2**

*Row 244, 4th square from right edge,  
symbol needs to be red.*

*Row 266, 4th square from left edge,  
needs to be a SSK.*

## **Chart A, Part 2**

Top section, right column of row numbers,  
276 and 278 should read 376 and 378.

**Page 139 Vitals** *gauge for large sock  
needs to be: 36 sts and 50 rounds.*