

Arans & Celts

The Best of Knitter's

Corrections & Clarifications

First Printing 2003, Second Printing 2004

Page 25, Chart C

From Row 24 up through Row 37
 Increase (V) and decrease (/) symbols
 are in the wrong places. They need to be
 moved up one row and 1 stitch to the left.
 See corrected chart below.

Page 78, Sleeves

Before *Begin Dotted pat chart*: add
 Change to larger needles.

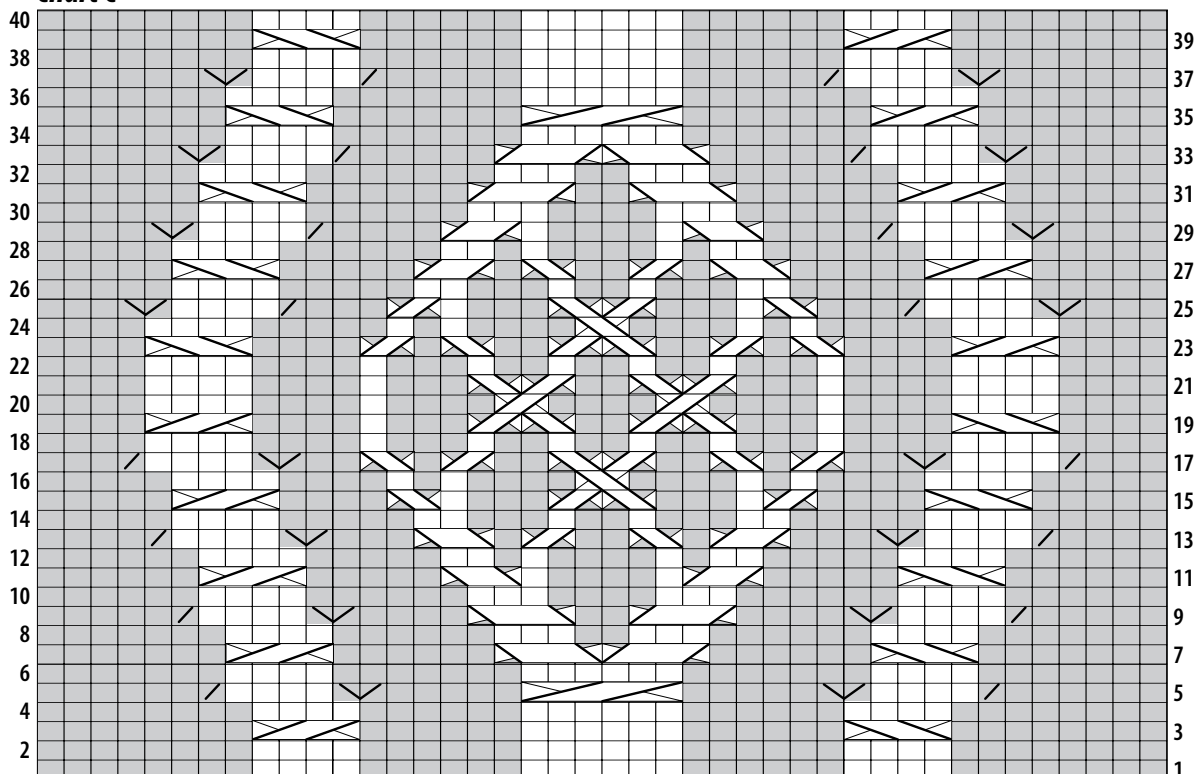
Page 95, the key needs to read:

K on RS, p on WS
 P on RS, K on WS

Page 17

Missing: *2/1/2 RPC Sl 3 to cn, hold to
 back, k2; sl last p st from cn to LH needle
 and purl it; k2 from cn.* Chart is correct.

Chart C



42 sts