



GuyKnits

Corrections & Clarifications

Page 66

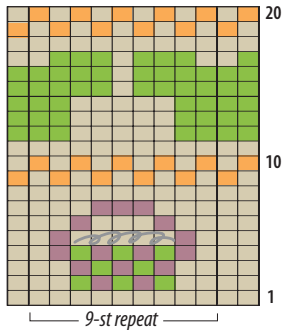
What's My Line

Opening paragraph. "For more choices, see page 80."

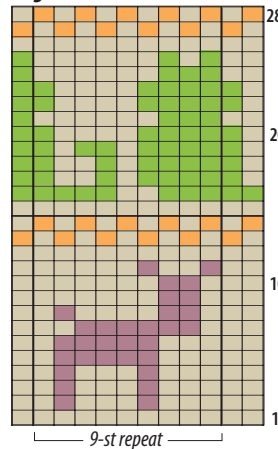
Choices were not placed on page 80. They were replaced with other content. Charts below are the other choices.

They will be incorporated into the next reprint on page 67.

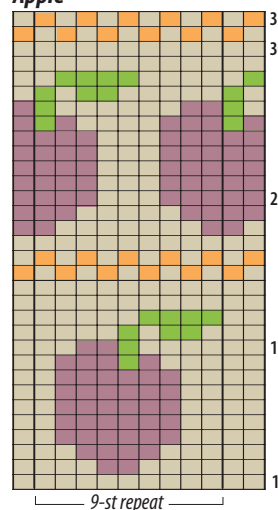
Knitter's



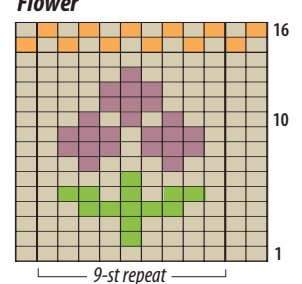
Dog & Cat



Apple



Flower



Color key

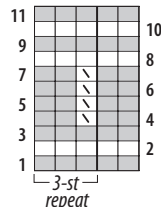
- MC
- A
- B
- C

Stitch key

- K on RS, p on WS with MC
- P on WS, k on WS with MC
- K on RS, p on WS with A
- ▨ Embellish baskets with embroidered 'hanks' of yarn.

Note: Add beads or embroidery to 'sweaters.'

Pinestripe Rib



Pinestripe rib. (multiple of 3 sts, plus 2)

Rows 1-3 With MC, knit. 4 and 6 (RS) P2 MC, *k1 A, p2 MC; rep from* to end. 5 and 7 *k2 MC, p1 A; rep from* to last 2 sts, end k2 MC. 8-11 With MC, knit.