

Huck Lace

The Best of Weaver's
Corrections & Clarifications

First Printing 2000

Page 15: Thread-by-thread draft

The draft in the upper left corner has the treading sequence below the O and E reversed. The first three treading dots shown below the E should be below the O and the next three dots should be below the E, not the O.

Page 40 Placemats

Sley, centering for a width of 22-1/8" instead of 22-7/8". Also, in the parentheses at the end of the threading section, insert "72 ends plain weave" to read as follows: (72 ends plain weave, 655 ends lace, 72 ends plain weave, 799 ends total).

Page 54 Huck Lace Towels

The warp for Maryann Stamford's towels on 8 shafts should have 369 ends instead of 366, and the 4-shaft towels should have 364 ends instead of 362.

The tie-up for the 8-shaft draft in Figure 1 should be as follows:

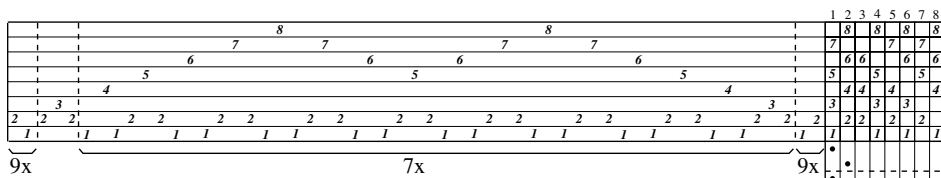
	1	2	3	4	5	6	7	8
8			8	8		8		
7	7	7		7			7	
6		6		6				6
5	5		5				5	
4		4			4			
3	3	3		3				3
2		2		2			2	
1	1		1		1			1

(continues on next page)

Second Printing 2001

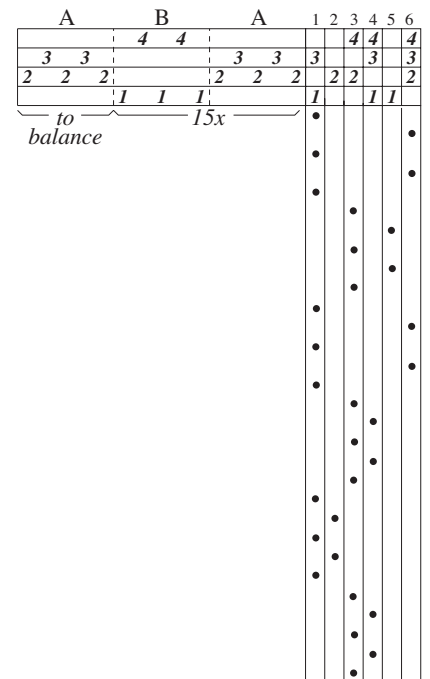
Page 66: Placemats in 3-thread huck lace

The corrected draft for Figure 3 is shown below.



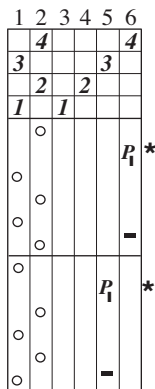
Page 44: 4-shaft draft for scarf

The corrected draft for Figure 2 is shown below.

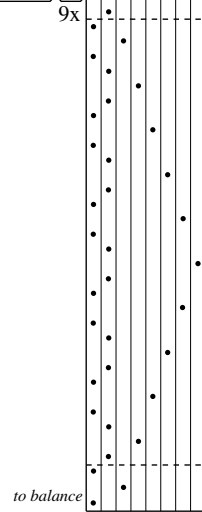


Page 70: 2b. Huck lace pick-up: four treading options

The corrected draft (second one in from the right) is shown below.

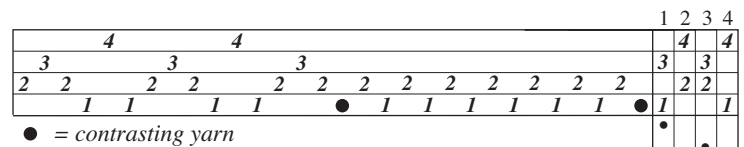


Pattern:
warp floats/plain weave
Background:
plain weave



Page 20: 2.

The corrected draft for Figure 2 is shown below.



fabric in
Photo b

fabric in
Photo c

Page 78: Text after the bullet Thread

Instead of "end with a to c 1x", the text should read "end with a to b 6x, b to c 1x".

Page 79: Text under the draft in Fig. 1

Instead of "end with a to c 1x", the text should read "end with a to b 6x, b to c 1x".

Page 82: Text above photos should read:

a-h. Fine warp threads dark; heavy warp threads light

i-l. Fine warp threads light; heavy warp threads dark

(continues on next page)

Second Printing 2001

(continued)

Page 8:

The corrected draft (bottom left) is shown below.

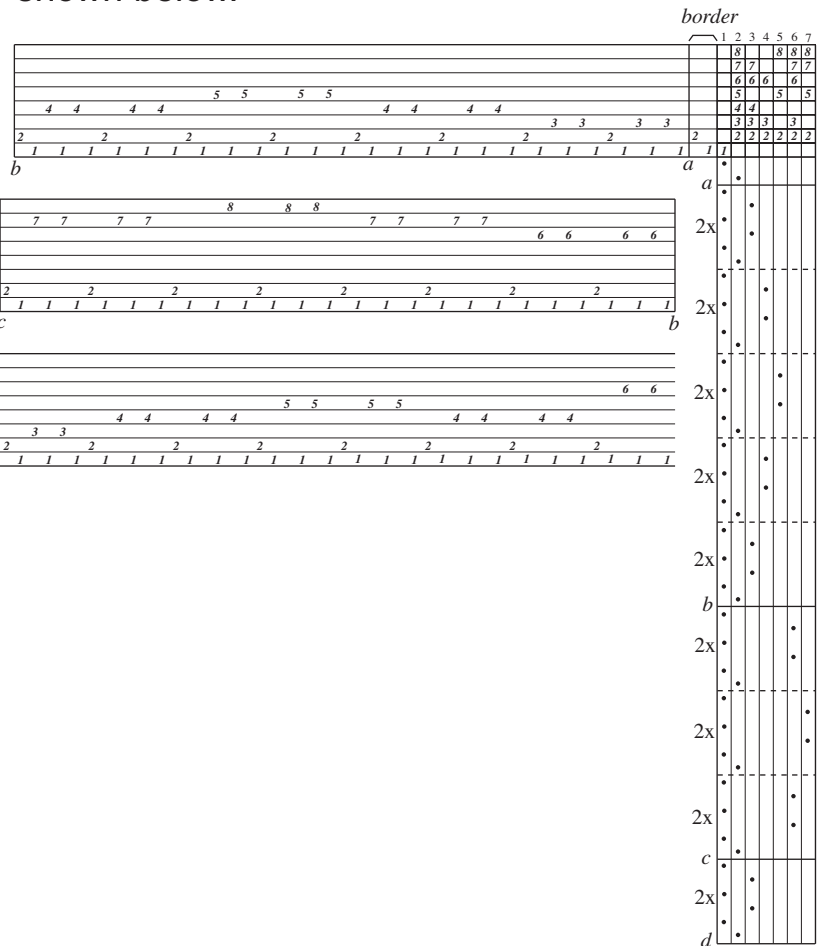
A	B		<i>plain weave</i>					
	1	2	3	4	5	6		
	4	4			4	4		
3	3			3	3			
2	2	2	2		2	2		
	1	1	1	1	1			
<i>j. lattice</i>								
<i>k. waffle variation</i>								

Page 8: Text to add to to the third column under Weave a Sampler, at the end of the paragraph with the last bullet (that starts Follow the treadling instructions):

(Some of the treadlings cause floats in the plain-weave edges. To design fabrics using these treadlings, use a floating selvedge instead of threading plain weave.)

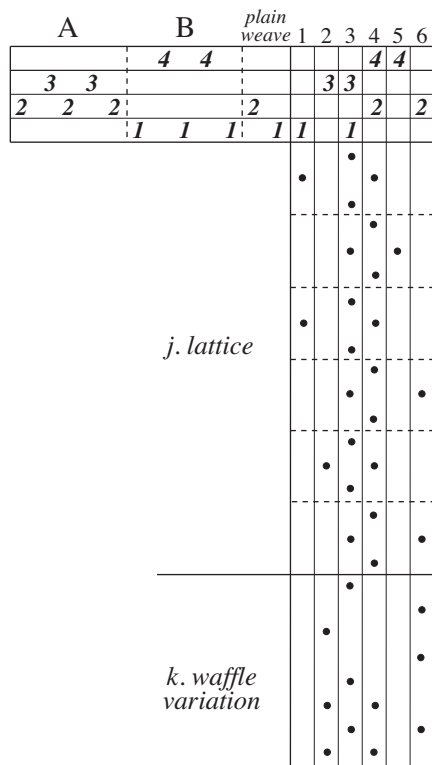
Page 66:

The corrected Figure 4 draft is shown below.



Page 8:

The corrected draft (bottom left) is shown below.



Page 53:

The corrected draft 3a) is shown below.

3a. Threading draft for huck lace napkins

Thread:
 a to b 18x (72 ends)
 b to c 1x (55 ends)
 c to e 8x (400 ends)
 c to d 1x (45 ends)
 c to b 1x (55 ends)
 b to a 18x (72 ends)
 699 total ends

