



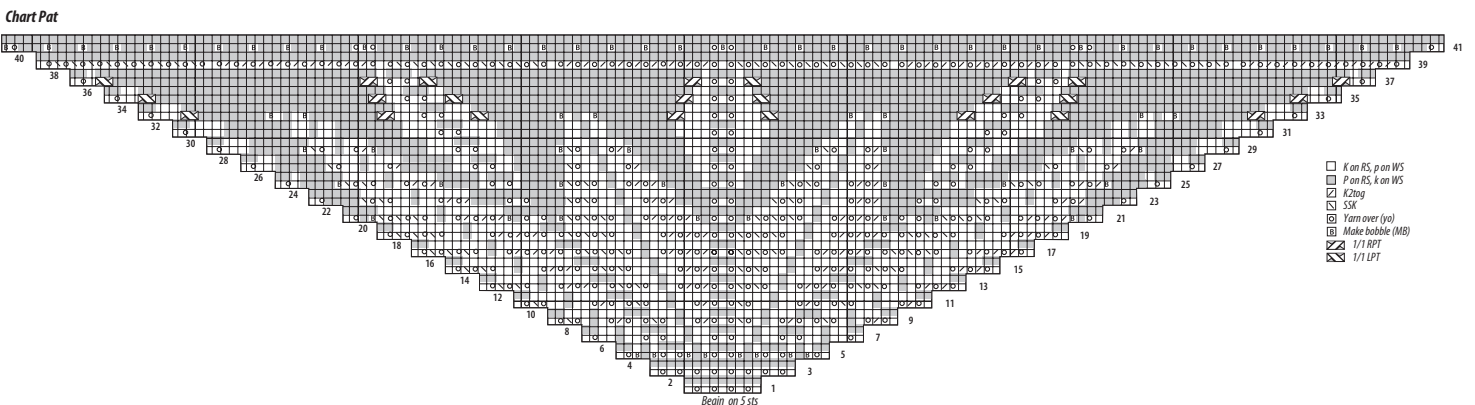
Great American Afghan

An heirloom masterpiece

Corrections & Clarifications

First Printing 2003

Chart for Square 5, page 16



Square 9, Lily Chin Row 9...across to within last 3 sts, p1 irb ...

Square 16, Julie Hoff-Weisenberger
Row 1...row 1 of chart, p 2,...
Row 2...sts of chart k 2...

Square 10, Wendy Sacks Chart pat Row 1 and all WS rows except rows 5, 11, 13, 17 & 23...

Square 19, Barbara Venishnick
Top triangles Row 14 and last sentence should read: K3tog. Leave these 8 sts on right-hand needle and rep 3 times more (pick up and knit 8 sts for each remaining triangle) (4 triangles).

Square 12, Bette Anne Lampers
Top-edge triangles With WS facing, pick up and p 16 sts along triangle just worked -- 17 sts.
Next row (RS) Sl 1, work in MS pat.
Next row Sl 1, work in pat over 15 sts, p2tog.
*Next row Sl 1, work in pat to last 2 sts, k2tog.
Next row Sl 1, work in pat over 14 sts, p2tog.
Repeat last 2 rows as established until 3 sts rem.

Square 20, Diane Zangl
Flower pat Row 7 K 2, *RL, k1, LL, k7...
Row 17 K7, *RL, k1, LL, k7 rep from *.

Great American Afghan

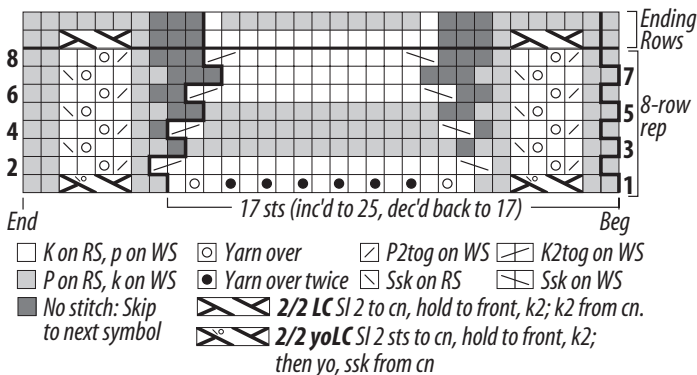
Second Printing 2009

Square 23, Meg Swanson

Rnd 6 ending st count should be 36
 Rnd 7 ending st count should be 40
 Rnd 8 ending st count should be 48

Square 24, Eugene Beugler

Ending Row 1 should read:
 *P2, 2/2 LC, p2, k9; rep from * to last 8 sts, end
 p2, 2/2 LC, p2.
 See chart corrections below:



Note: On row 2 of chart pat, work double yarn overs as foll: drop the first yo and p the 2nd.

Square 8, Kathy Zimmerman

Chart B

Rows 2, 4, 6 & 8
 The left-slanting cable icons are incorrect.
 They need to be for a 2/1 LPC.

Square 20, Diane Zangl

This square originally appeared in *Knitter's* K43.
 (Not K46.)

Square 24, Gene Beugler

Stitch Key
 2/2LC - instructions added to key.
 2/2 LC Sl 2 to cn, hold to front, k2; k2 from cn.