

# Knitters's Issues 51-99; Corrections Supplement



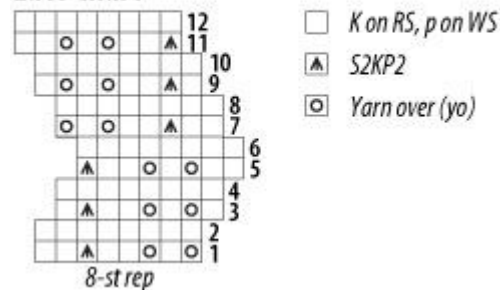
## Knitter's 99 Corrections & Clarifications

### Page 57

“I Thee Wed” corrected **Chart** is shown here:

*K99, p.57*

### Lace Chart



### Page 44

Stripe 27 (29, 32), **Row 6** should read ...bind off 8, p16 (not 17)...

### Page 44

“Monet” the missing paragraph for the *Back yoke* at the bottom of the page, after —49 (49, 57) sts is as follows:

Continue stripe pat as established according to Color Sequence Chart, decreasing at beg and end of rows 1, 2, 3, and 5 of each stripe until 9 sts remain. **Row 1** K1, k2tog, k3, SSK, k1.

**Row 2** P1, SSP, p1, p2tog, p1. **Row 3** K1, S2KP2, k1. **Row 4** Purl. **Row 5** S2KP2. Fasten off.



## Knitter's 98 Corrections & Clarifications

### Page 33

“Electric Entrelac” **Tier 7, Row 5** should read: SSK, k4, **SSSK**. **Row 11** should read: SSK, k1, **SSSK**.

### Page 48

“Pukas” **Left Front Begin Chart E** should read *Begin Chart A* and *Row 1* should read **Work Chart A** (not E) across... .

### Page 62

“Diamonds & Pearls” (middle column) Chart B is to be worked **4** (not 3) times. This sentence

needs to be inserted just before **Beg Chart C: The 4th time the 34-st rep is worked 4 times —531 sts, 175 in each section.** And the last line should read: ...34-st rep **4** (not 3) times in each section—**549** (not 447) sts; 181 (not 147) sts... .

**Chart B, Row 15:** st 23 should be a **yo**, st 24 should be an **SSSK** and st 25 should be a **yo**. Also, the right-side bracket should read: 34-row rep **4x** (not 3x).

**Chart C** The bracket at the bottom should read: 34-st rep **4x** (not 3x).



## Knitter's 97 Corrections & Clarifications



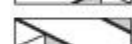
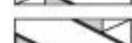
### Page 34

"Helical Hat" **Vitals**, 5mm/US 8 dpn's are not needed.

### Page 48

"Telkari" additions to the **Cable key** are as follows:

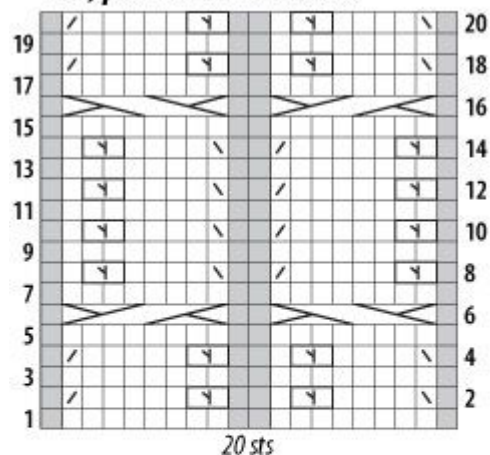
#### **K97, p.48, Cable key additions (Rows 1 and 19)**



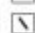
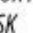



-  **2/2 RPKC** Sl 2 to cn, hold to back, k2; p1, k1 from cn
-  **2/2 RKPC** Sl 2 to cn, hold to back, k2; k1, p1 from cn
-  **2/2 LPKC** Sl 2 to cn, hold to front, p1, k1; k2 from cn
-  **2/2 LKPC** Sl 2 to cn, hold to front, k1, p1; k2 from cn

### Page 52

"Curly Willow" corrected **Chart & Stitch key** are shown here, but have been revised in K97 corrections.

#### **K97, p. 52 Chart corrected**



-  K on RS, p on WS
-  P on RS, k on WS
-  SSK
-  K2tog
-  Kf&b (Knit into front and back of st)
-  **4/4 RC** Sl 4 to cn, hold to back, k4; k4 from cn
-  **4/4 LC** Sl 4 to cn, hold to front, k4; k4 from cn

### Page 54

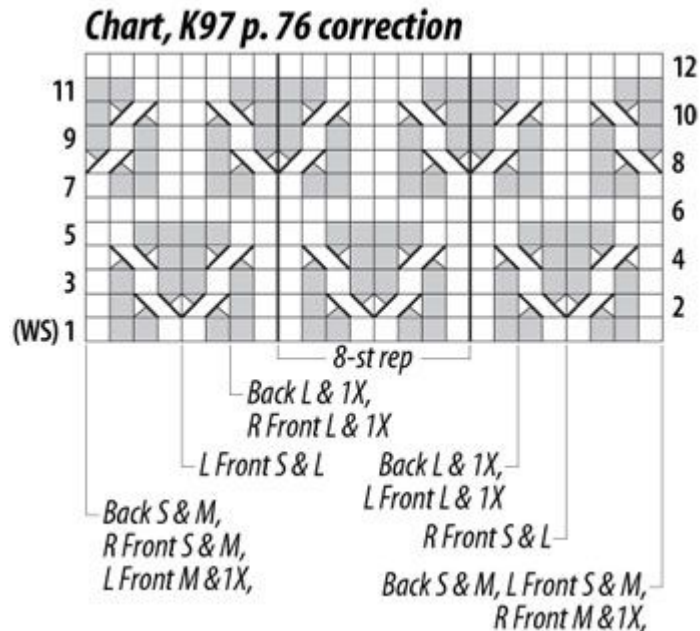
"Red Fern" **Stitch Key** for Right Twist on WS needs to read...hold to RS (not WS) Left Twist on WS needs to read...hold to WS (not RS).

## Page 56

"Dorm Princess" Note 1: change L1P to **make 1 purl (M1P)** Back & Sleeves First **Next Row** needs the following changes: Start with P1 (instead of p2).....**M1P** (instead of L1P).....end with p1 (instead of p2)

## Page 76

"Shifting Sandstone" Chart: start and end labeling for different sizes was incorrect. See corrected chart:



## Page 98

### "Red Fern" Shape armhole and neck

Shape shoulder needs to read as follows:

Shape shoulder by binding off 5 (6, 6, 6, 7) sts at beg of next **2 RS** rows, then 6 (5, 6, 7, 7) sts at beg of next **RS** row. Cont in Slip St Rib Edge and Rev St st on rem sts...



## Knitter's 96

### Corrections & Clarifications

#### Page 26

"Hobnail wrap" yarn information should read: Cherry Tree Hill Yarn Alpaca Bulky in the Semi Solid Colorway Dove. P. 81 Yarn content is: 65% wool 35%, fine alpaca; 8 oz (226g); 370 yds (336m)

#### Page 52

Left Front, Shape shoulder needs to read as follows: Bind off 8 (8, 8, 10, 10, 10) sts at beg of next RS row, then 6 (7, 8, 8, 9, 10) sts at beg of next RS row, then 5 (6, 7, 7, 8, 9) sts at beg of next RS row.

## Page 58

"Rosemal" Yarn A in the photo caption is 018, not 108

Braid Pat Rnds 1, 2 & 3 the colors are reversed. Color B needs to be used first, then MC.  
Mitten chart rnd 15 needs to be a purl rnd.  
Hat finishing, second line of text should read as follows.  
*and chart 2, for the 7 (not 5) heart designs.*

**Page 60**

“Two Pairs” in the vitals column, the yarn icon should be a 1 for super fine weight, not a 3, and the needle size is 2.75, not 3.75.

**Page 68**

Chart: Row 1, second cable needs to be a 2/2 RC (not 2/2 LC). Row 5, the first cable needs to be 2/2 RPC, the second cable needs to be 2/2 LPC.

**Page 70**

“New York Blues” the **Back** instructions are correct, but the schematic is mislabeled. The left measurement should read 23½ (24½, 25½, 26½, 27½)", the armhole 7½ (8, 8½, 9, 9½)", and below the armhole 7 (6¾, 6½, 6½, 6)".

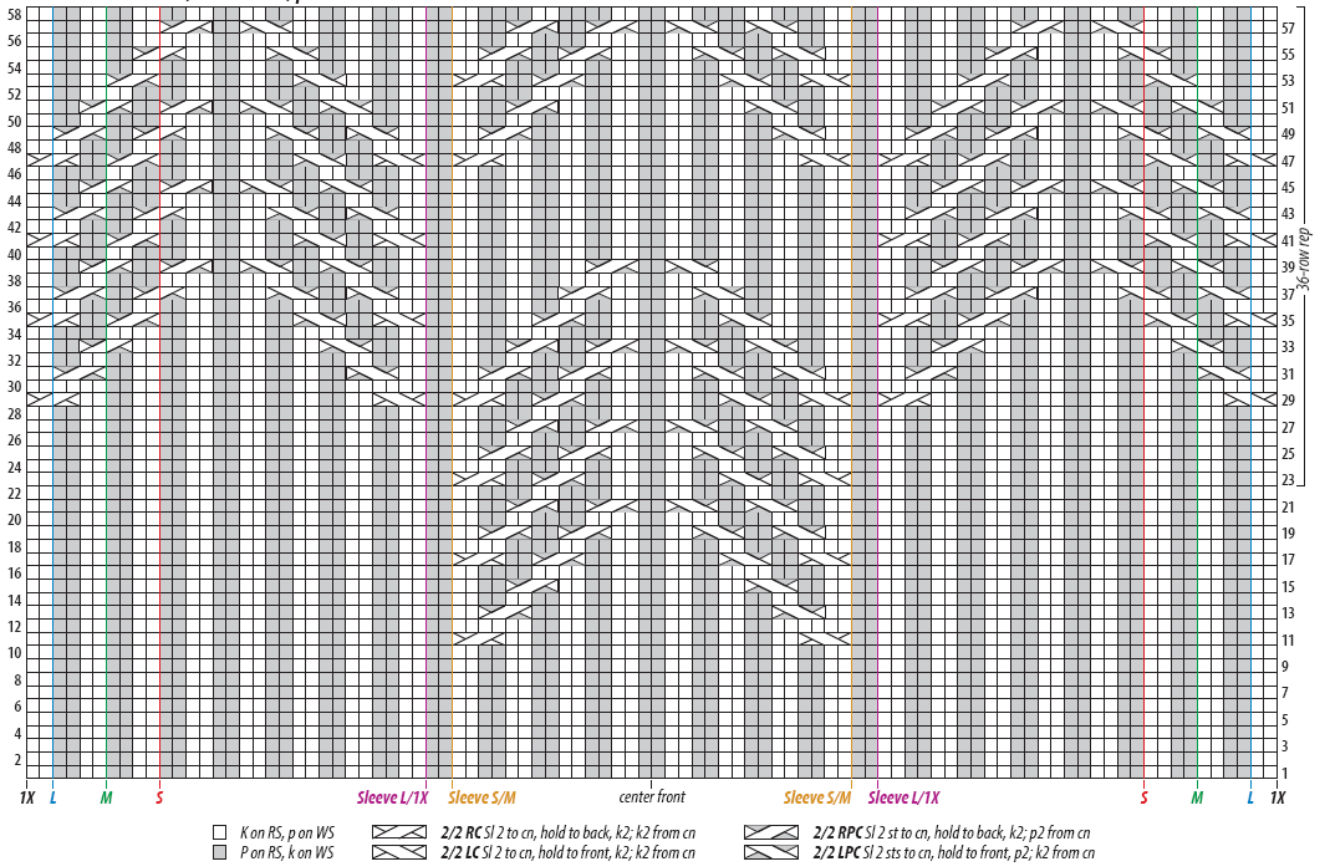
**Page 76**

“Rings & Rungs” Under Back, the sentence before “Foundation row” should read “Continue with larger needles” instead of “Change to larger needles.”

**Page 78**

“Adam’s Ribs” The Chart shows 7 rows between cabled chevrons and there should only be 5 making a repeat of 36 rows instead of 48.

Chart for Adam's Rib, Knitter's 96, p. 78



## Page 81

A last minute folio change was not reflected on the yarn page; see the correct page number in parentheses: P.26 (30), P.30 (26 with new yarn info listed above), P.46 (48), P.48 (50), P.52 (54), P.54 (56), P.58 (64), P.60 (66), P.62 (68), P.64 (70), P.66 (72), P.68 (74), P.70 (76), P.72 (78), P.76 (40), P.78 (58), p.80 (60).

## Yarns



P. 26 Cherry Tree Hill Yarn Alpaca Bulky  
65% wool, 35% fine alpaca; 8oz (226g);  
370yd (336m)



P. 30 Fiber Trends-Naturally Handknit  
Yarns Vera 100% pure wool; 14oz (50g);  
87yd (80m)



P. 34 Westminster Fibers-Rowan Yarns  
Design Line Kaffe Fassett Colourscope  
Chunky 100% wool; 3½oz (100g); 175yd (160m)



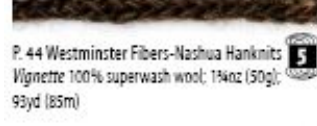
P. 38 Westminster Fibers-Rowan Yarns  
Design Line Kaffe Fassett Colourscope  
Chunky 100% wool; 3½oz (100g); 175yd (160m)



P. 40 Mountain Colors 4/8's Wool  
100% wool; 3½oz (100g); 250yd (229m)



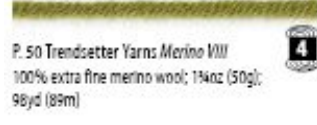
P. 40 Mountain Colors Mohair  
78% mohair, 13% wool, 9% nylon; 3½oz  
(100g); 225yd (205m)



P. 44 Westminster Fibers-Nashua Hanknits  
Vignette 100% superwash wool; 14oz (50g);  
95yd (85m)



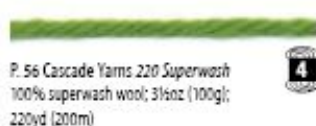
P. 48 Plymouth Yarn Co. Suri Merino  
55% Suri alpaca, 45% extra fine merino;  
14oz (50g); 109yd (99m)



P. 50 Trendsetter Yarns Merino VIII  
100% extra fine merino wool; 14oz (50g);  
98yd (89m)



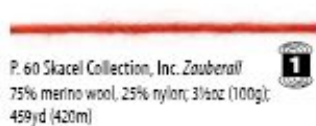
P. 54 Brown Sheep Co., Inc. Lamb's Pride  
Superwash Worsted 100% wool; 3½oz  
(100g); 200yd (183m)



P. 56 Cascade Yarns 220 Superwash  
100% superwash wool; 3½oz (100g);  
220yd (200m)



P. 58 CNS Yarns-Mission Falls 1824 Wool  
100% merino superwash; 14oz (50g);  
85yd (78m)



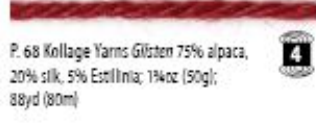
P. 60 Skacel Collection, Inc. Zauberall  
75% merino wool, 25% nylon; 3½oz (100g);  
459yd (420m)



P. 64 Malabrigo Yarn Aquarella 100% wool;  
3½oz (100g); 65yd (59m)



P. 66 Cascade Yarns Greenland 100% merino  
superwash; 3½oz (100g); 137yd (125m)



P. 68 Kollage Yarns Gilsten 75% alpaca,  
20% silk, 5% Estilinia; 14oz (50g);  
88yd (80m)



P. 70 Fairmount Fibers LTD Wool Classica  
Natural 100% wool; 3½oz (100g);  
138yd (126m)



P. 72 Tahki-Stacy Charles Torino Bulky  
100% extra fine merino wool; 14oz (50g);  
55yd (50m)

## Yarn weight categories

### Yarn Weight



1 Super Fine 2 Fine 3 Light 4 Medium 5 Bulky 6 Super Bulky

### Also called

1 Sock Fingering Baby 2 Sport Baby 3 DK Light-Worsted 4 Worsted Afghan Aran 5 Chunky Craft Rug 6 Bulky Roving

### Stockinette Stitch Gauge Range 10cm/4 inches

27 sts to 32 sts	23 sts to 26 sts	21 sts to 24 sts	16 sts to 20 sts	12 sts to 15 sts	6 sts to 11 sts
------------------------	------------------------	------------------------	------------------------	------------------------	-----------------------

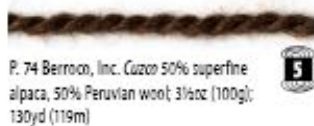
### Recommended needle (metric)

2.25 mm to 3.25 mm	3.25 mm to 3.75 mm	3.75 mm to 4.5 mm	4.5 mm to 5.5 mm	5.5 mm to 8 mm	8 mm and larger
--------------------------	--------------------------	-------------------------	------------------------	----------------------	-----------------------

### Recommended needle (US)

1 to 3	3 to 5	5 to 7	7 to 9	9 to 11	11 and larger
--------	--------	--------	--------	---------	---------------

Locate the Yarn Weight and Stockinette Stitch Gauge Range over 10cm to 4" on the chart. Compare that range with the information on the yarn label to find an appropriate yarn. These are guidelines only for commonly used gauges and needle sizes in specific yarn categories.



P. 74 Berroco, Inc. Cuzco 50% superfine  
alpaca, 50% Peruvian wool; 3½oz (100g);  
130yd (119m)



P. 76 Universal Yarn Deluxe Chunky  
100% wool; 3½oz (100g); 120yd (110m)



P. 78 Lion Brand® Yarn Company Wool-  
Ease® Thick & Quick® 86% acrylic, 10%  
wool, 4% rayon; 6oz (170g); 106yd (97m)



Page 45, On the Return Row 3 should be: K1 tbl, yo, \*LT, yo; rep from \*, end k1 tbl.

### **Chevron Shadows** Page 40

*Vitals:* (optional) 3.5mm/US4 circular needle 60cm/24" long for arm bands.

*Left side panel,* There is text missing after Row 7 of the short-row shaping and before placing sts on hold: Cont to dec 1 st at beg of every RS row 3 (4, 6, 7) times more—49 (50, 51, 53) sts. Work even until side panel measures 3 3/4" from pick-up row (at widest point).

*Left Front,* Second "Next row" should read: Next row (RS) K1, yo, k to last **3 sts**, k2tog, k1.

Under *Finishing* should read as follows: block pieces. Sew shoulders.

*Armhole bands* before "Sew band seam" insert the following: Join side seams, using 3-needle bind-off.



### **Knitter's 86** **Corrections & Clarifications**

#### **Tie-dyed Boxes**

Page 79, Second column Mitered rectangle 1: total number of sts should be 74.

#### **Walnut Twist**

Page 95, *Second column*

**Back** With WS facing, join yarn at underarm and shape armholes by **dec 1 st each side (inside 3-st rib) every RS row 15 (16, 19, 21) times—58 (62, 62, 64) sts. Work even until armhole measures 8 3/4"**. Place sts on hold.

**Finishing** Work front and neckband with smaller needle, not larger needle.



### **Knitter's 84** **Corrections & Clarifications**

#### **Gimme-a-T**

Page 58, Photo caption missing. Medium: 3 balls FILATURA DI CROSA 127 Print in color #27 Dk. Celery Green (A); 4 balls #35 Purple (B); and 1 ball #36 Teal (C)

Page 59, The correct colour sequence for Module 5 is:

12 rows A

38 rows B  
12 rows A  
8 (14, 20, 32) rows B  
1 row C  
6 rows B

**Cable Dude**, page 74.

The yarn weight listed on **page 119** for Manos del Uruguay should be **#4 Medium weight**.

**Headin' East**, page 86.

Right Side, Sleeve: With larger straight needles and A (not B)....

Right Side, Front: After neck shaping is complete: With B (not A) work 6 rows in St st. P 1 ROW ON RS for turning ridge.

Work bottom band, neckband, I-cord ties and crochet chain ties with A, instead of B.

The yarn amounts were incorrect. Here are the revised amounts for the sample Size Small, with revised yardages for all sizes:

4 balls #1129 Lincoln Blue (B)  
3 balls #1146 Island of the Sun (A)  
3 balls #1118 Twig (E)  
2 balls #1135 Cala Cala Moss (D)  
2 balls #4647 Secret Garden (F)  
1 ball #1153 Damask Red (C)

S M L 1X

A 300 (350 400 435) yds  
B 400 (475 530 575) yds  
C 100 (120 140 150) yds  
D 200 (240 270 295) yds  
E 300 (360 400 435) yds  
F 200 (240 275 300) yds

**Doodles**, page 102.

On the color key for the chart, the letters **D** and **E** need to switch. **D** (Pistachio) is the **green** color and **E** (Zinnia) is the **red** color.



### **Knitter's 83** **Corrections & Clarifications**

**Aqua Cascade**, page 98.

Ruffle Collar: Since the stitches for the collar are picked up with the WS facing, the direction for the pick-up row should be reversed. Begin at the left shoulder and pick up 30 stitches along the back neck, 60 stitches along right front neck, and 60 stitches along the left front neck.

**Flannel Garden**, page 52-53.

Chart: The WS rows in the 6 stitches of the trellis pattern in the bodice should be K1, p4, k1.



## Knitter's 82 Corrections & Clarifications

### Hempathy, page 54.

The yardage should be 154 yards per ball, not the 175 yds as listed on the yarn page. Their colour cards say 175 yds per.

### Cable Lace Hoodie, page 55.

Right Side of Hood Next row should read: (RS) [K1, p15] **twice...**

Top of first column. After working rows 1–22 of Right Side of Hood Chart: Next row (RS) [K1, p15] TWICE, MB, p15, k1, p12, MB, p12, k1, [p15, k1] 3 times.

### Bowed & Narrow, page 56.

(Notes on shaping: Each dec in Mesh Pat must be balanced with a yo to keep st count consistent. When shaping ends of scarf, omit the yo's if the matching dec can't be worked--this does not include k2tog decs at end of RS rows.)

With larger needles and 1 strand yarn, invisibly cast on 48 sts. Foundation row (RS) Knit.

The correct Mesh pattern is: Foundation row (RS) Knit. Beg Mesh Pat: Row 1 (WS) [K2tog, yo twice, k2tog] 12 times. 2 [K1, k first yo, p 2nd yo, k1] 12 times. 3 K2, [k2tog, yo twice, k2tog] 11 times, k2. 4 K2, [k1, k first yo, p 2nd yo, k1] 11 times, k2. Rep rows 1–4 . . . .

### Take A Turn, page 66.

The pattern is missing 2 lines at the beginning of the yoke.

After "Change to MC," it should say: Next row (WS) Purl. Next row P5 (4, 4, 3, 1), \*[k1, p3, k1, p5]; rep from \* 8 (8, 9, 10, 12) times more, [k1, p3] 0 (2, 2, 2, 1) times, k0 (0, 0, 0, 1), p0 (1, 1, 0, 1). Then continue from, "Beg Yoke Rib Pat: Row 1..."



## Knitter's 81 Corrections & Clarifications

### Bag of Checks, page 94.

Color #1212 of **Loft Classic** yarn has been replaced with **#1211**.

### Rodeo Gal, page 92.

Clarification for Back. Work 7 rows in St st, Beg with a purl row.

Sources for the notions used in the Rodeo Gal are:

2 western buckles - #7875 at Oregon Leather (503) 228-4105

8 ¾"/19mm Indian Head Nickel buttons- #90558 JHB International

34 ½"/12mm coral beads

assorted turquoise, coral and gemstone nugget beads

15 yds brown suede lacing—Firemountainsgems.com

One 18" straight hex-open frame

6 silver handbag feet—Ghees.com

Silver wire—craft and bead stores

Brown and red heavy duty quilting thread  
beading needle  
tapestry needle  
sewing needle  
long quilting pins  
small amount of heavy duty interfacing or buckram  
18 ½" x 5 ½" solid 1/8" Masonite board (hardware stores will cut)

Optional:

¼ yd fabric to cover board  
2 yds fabric to line bag



### **Knitter's 80** **Corrections & Clarifications**

**Mosaic Mice** , p. 68. The **red stitches** on **rows 15 and 16** of the chart should have the **slip stitch** symbol in them.



### **Knitter's 79** **Corrections & Clarifications**

**Whispering Rose** , p. 64. The **SK2P** symbol on row 15 of Chart B should be on **row 15** instead. The symbol on row 16 should be a **white square**.



### **Knitter's 78** **Corrections & Clarifications**

**Blue Ridge Jacket**, p. 84. Sleeves, second line, after *K 8 rows*, insert "change to larger needles before Beg with a knit row,".



### **Knitter's 77** **Corrections & Clarifications**

**Lipstick Bag**, p. 78. After row 2 of the ruffle has been worked, you will have 24 dc (not 48).

**Flower Power** p. 96, in the Sleeve schematic, the first length measurement should be 10½.



### Knitter's 76 Corrections & Clarifications

**Salt & Pepper**, p. 84. Yarn color A should be color #9402 instead of #2904.

**Buds & Blossoms**, p. 94. Yarn amounts are 10 balls #480 Purple (MC), 1 ball #710 Red (A), 1 ball #750 Green (B).



### Knitter's 75 Corrections & Clarifications

**Lily of the Valley**, p. 38. **Note 1** says to see the *School* for S2KP2. No S2KP2 was used in the pattern.

### Knitter's 74 Corrections & Clarifications



**Anchors Aweigh**, p. 105. Under "Finishing", the instructions for the Front neckband should read: "With RS facing, pick up and k51 sts along front neck edge. K 5 rows. Bind off."

**Chambray Diamonds**, p. 72. Additional Note: When working a row after a double yo, work into the front of the first yo, work into the back of the second yo.

**Dress White**, p. 52. The stitch count for the right (and left) fronts should be: 96 (98, 98, 100), not 89 (91, 91, 93).



### Knitter's 73 Corrections & Clarifications

**Mexicali Baby Ole** p. 12. The clarification for Mexicali Baby Ole should say 'sts' (not rows): For a shorter collar, try working 2 additional sts on each short row instead of just one.

**Cinnabar**, p. 58. Left Front, under Work first neck bind-off and diagonal edging: After picking up stitches along the diagonal edge between points A and B and working 2 rows of Stockinette stitch, you should bind off the stitches. Left Front, under "Work first neck bind-off and diagonal edging": After picking up stitches along the diagonal edge between points A and B and working 2 rows of Stockinette stitch, you should bind off the stitches.

**Triangle Stripes**, p. 84. The letters A and B in the table in the left column need to switch: "A" goes with the Medium Weight yarn icon (and yardage) and "B" goes with the Bulky Weight yarn icon (and yardage).

Yarn A is Bryspun Kid 'n Ewe (medium weight #4), color 110 Black. Ginger used 360 yds for the medium size.

Yarn B is Prism Yarns Cool Stuff (bulky weight #5), color Tapestry. Ginger used 450 yds for the medium size.

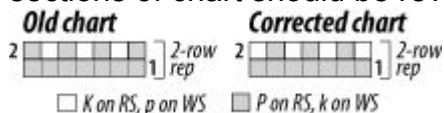


## Knitter's 72 Corrections & Clarifications

**Basic Strong Heel Sock**, page 36. Turn Heel: Work short rows 1–4 as foll:  
Row 1 (RS) K across first dpn (center of heel); k1, ssk, k1, turn work. 2 Sl 1, p3, p2tog, p1, turn. 3 Sl1, k4, ssk, k1, turn. 4 Sl 1, p5, p2tog, p1, turn.

**Construction Zone**, page 50, the sizing designations in the table at the left should be: S (M, L), not XS (S, L).

**9-lane Interchange**, page 56, the knit and purl stitches over the 7 stitches of the Broken Rib sections of chart should be reversed as shown:



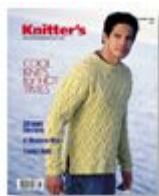
**Gridlock**, page 58, the sample is size Large (not size Medium as stated in the photo caption).

**Double Crossings**, page 60. Chart A: The 2/1/2 RPC's of Rows 4 & 10 should move over one stitch to the right: K2, p1, 1/1 RC, p1, 2/1/2 LPC, p1, 2/1/2 RPC, p1, 1/1 LC, p1, k2.

**Ridges and Bridges**, p. 74. Chart B: Row 26 the 16th square from the left should be white. And in the key, the 2/2 RC should slant to the right and the 2/2 LC should slant to the left.

**Round Trip**, page 80. Clarification for Note 3: Kay said that using 10 balls (1100 yds) of Noro for the sweater will increase your color choices. She only used the equivalent of 8 balls (880 yds) in the sweater.

**Turns Ahead**, page 90. Under the gauge swatch icon for the adult size hood, it should say to use size 6.5mm/US 10 1/2 needles, not 5mm/US 8's.



## Knitter's 71 Corrections & Clarifications

**Mango Miters**, p. 44. The yarn color used is #921.

**Mocha Cooler**, p. 46. The yarn color used is #1821.

**Cardigan with a Twist**, p. 52. Under Finishing, p. 65, the back neck stitches should be bound off.

**Mexicali Baby Ole**, p. 72.

Yardage required in vitals: 459 (550, 650) yds.

Measurements: B 9 1/2 (10 1/2, 11 1/2) C 10 1/2 (11 1/2, 12 1/2).

Front Neck Shaping (Cast on rows): For size 18 mos, cast on ...2 sts 3 times (instead of 2

times). Stitch count is 69 sts (instead of 59 sts). Left Sleeve (Dec rows): Dec 1 st each side ...every 4th row 8 (6, 4) times (instead of 7 (5, 3) times).

A clarification: For a shorter collar, try working 2 additional stitches on each short row, instead of just one.

**Berry Berry Brioche Cloche**, p. 78. Yardage for Color A: 170 (170), Color B: 115 (115), Color C: 115 (115).



### **Knitter's 70** **Corrections & Clarifications**

**Cypress Needle Crew**, p. 58. *Fit*: M ( L, 1X, 2X); *Measurements*: A 47 (52, 58, 63)" B 26 (26, 27, 27)" C 32 (33, 34, 34)"; *Gauge*: 21 sts and 30 rows to 10cm/4" over St st (k on RS, p on WS), using 5mm/US 8 needles; *Yarn*: Medium weight, 1850 (2100, 2300, 2550) yds of Main color (MC) and 150 yds of Contrast Color (CC); *Needles*: 4 and 5 mm/US 6 and 8, or size to obtain gauge and 4 mm/US 6 circulars, 16" (40cm) long; *Extras*: St markers and yarn needle.

**Silken Waves**, p. 74. Gauge: 26 sts to 14.5cm/5-3/4" and 32 rows to 12.5cm/5".



### **Knitter's 68** **Corrections & Clarifications**

**Convertible Collar Jacket**, p. 46. Yarn color should be blue not taupe.

**Seafoam Squares**, p. 68. Yarn amounts for color A should be: 3 (3,3,4), instead of 2 (3,3,3,).

**Gimme 5 Vest** p. 88. Bind off neck stitches after joining shoulders.

**Mandarin Blues**, p. 56. At the end of the Sleeves section, "Piece measures approx 16-3/4" from beg. Work 1-3/4 (2-1/2, 2-3/4, 3-1/4, 3-3/4, 3-3/4)" even." At the end of Finishing, insert the word Sew before the number of shoulder sts.



### **Knitter's 67** **Corrections & Clarifications**

**Page 6**. Russi Sales distributes Heirloom Breeze.

**Roman Stripe Duo** p. 32 & 72. The yarn color should be #3832 Denim not #3882 Periwinkle.

**Stars and Hearts Afghan** p. 50. The finished measurements should be 48-1/2" x 53".

**Page 60** "Zigzag Bags" *Rnd 13* of the Large Rainbow Bag needs a beginning bracket before the Inc 1. . . .

**Twelve Days** Page 64. The yarn color # for Color B should be 730, not 701.



### **Knitter's 64** **Corrections & Clarifications**

**Interlaced Diamonds**, p 116. The sleeve increases should read: ...inc 1 st each side every 4th row 6 (1, 0) times, then every 6th row 7 (11, 12) times. This will give you the correct number of stitches and rows.

**Rounded Cables**, p 117. In the first column, 2nd line, the stitch count should be: 66 (66, 68, 70) sts in front and back, 43 (43, 45, 47) sts in each sleeve.



### **Knitter's 63** **Corrections & Clarifications**

**Market Squares**, p. 42. The yarn amounts should be: 3 balls A; 2 each B, C, D and E.

**Market squares**, p. 75. Tier 5 should read: With RS facing, pick up and k12 sts along Rectangle 1 from previous tier.

**Easy as Pi Pillows**, p. 43. The color number for Seafoam (C) is #100, not #10.

**Diamond Head**, p. 30. The V symbol on Row 16 of Chart C should be a / (k2tog).



### **Knitter's 62** **Corrections & Clarifications**

**On the Neutral Track**, p. 38. The color number for white lined is #2831.



### **Knitter's 61** **Corrections & Clarifications**

**Sleeves in Your Pi**, p. 102. The stitch key text for the gray square should read K on WS (not P on WS).

**The Great American Aran Afghan**, p. 34. On Marion Tabler's square, when working Chart B on the left side of the square work 2/2 LC, instead of 2/2 RC on chart rows 17, 21, 39, and 43. Chart B at the right side of the square is okay.

**Viking Frigga**, p.110. The number of balls of Lopi needed for the coat is: 12 (13, 15, 17); and for the cape 5 (6).



## Knitter's 60

### Corrections & Clarifications

**Ribbing is no Yoke**, p. 44. Yardage requirements should be: 1030 (1105, 1275, 1455)

**Pages 68, 70, 73, 75.** The gray squares in the chart keys should read: P on RS, k on WS.

**Hues in Horizontal**, p. 108 and 121. Color B #424 is Teal (not Jade) and color D #423 is Jade (not Teal). For the sleeves, change to larger needles after working the ribbing.

**Adult Surprise Revisited**, p. 126. Some of the chart colors are not clear. They are from top to bottom:

Rows 83-88 MC Slate; 77-82 A Med. Brown; 75-76 D Olive; 73-74 E Brick; 71-72 D Olive; 63-70 A Med. Brown; 61-62 MC Slate; 59-60 C Khaki; 53-58 E Brick; 47-52 D Olive; 45-46 A Med. Brown; 39-44 C Khaki; 35-38 MC Slate; 29-34 B Green; 27-28 A Med. Brown; 25-26 D Olive; 23-24 A Med. Brown; 15-22 MC Slate; 13-14 C Khaki; 11-12 E Brick; 3-10 B Green; 1-2 C Khaki.



## Knitter's 59

### Corrections & Clarifications

**Counterpanes To Go**, p. 34 Change the chart and corresponding rows of "In Other Words" as follows: Row 113, the 2nd to last yo should be a k1. Row 157, the ssk should be a sl1.



## Knitter's 58

### Corrections & Clarifications

**Two-way Ribbing**, p. 72. In the second column just before "Shape raglan armholes," it should say "Change to size 7 needle."

**Mitered Mozart**, p. 47. Charts A and B: the second rows 82 and 84 should be rows 92 and 94.



## Knitter's 57

### Corrections & Clarifications

**Letters**, p. 94. Striped hat is designed by Maria H. Mitchell.



## Knitter's 56 Corrections & Clarifications

**Great American Kids Afghan**, p. 31. On Nancy J. Thomas' afghan square: Whenever a blue line symbol sits above a yellow square, work it as a rectangle.

**Page 86** On the schematic the bottom set of numbers need to be removed, the top set of numbers need to replace them.

## Knitter's 55

**The Great North American Afghan**, p. 11. Charlotte Morris' square, Chart B, round 15 should be all purl, not knit.

**Multiple Choice Borders**, p. 19. The numbers 1 and 2 on the photo denoting the versions should be switched.

**Edgy Swirls**, p. 50. The needle size should be 2 instead of 12.

**Serpentine Simplicity**, p. 56. Reynolds' Cantata color number for Rhubarb should be #205 not #204.

**On the Point**, p. 72. Row 27 of Chart B should read: CCO 3 (2, 2, 2) sts, . . .

**The Great North American Afghan**, p. 8. The edging instructions that follow were omitted and later printed in issue 56, p. 43.

*Yarn:* #1636 Light Sage - 2 balls

*Needles:* Two size 7 (4-1/2mm) double-pointed needles (dpn)

*Notes:* 1 See *Knitter's School* for grafting. 2 Edging is applied to afghan as it is worked.

*Edging:* Cast on 4 sts onto dpn. Work row 1 of Edging Chart. Then cont in chart pat, attaching edging to afghan at end of every WS row (beg joining edging at seam between any 2 squares). Pick up approx 38 sts along each square. Pick up at corners as foll: work to within 2 sts of corner st, \*[pick up 2 sts in next st] twice\*, skip corner st, rep from \* to \* once. Graft final open sts to cast-on sts.

### IN OTHER WORDS

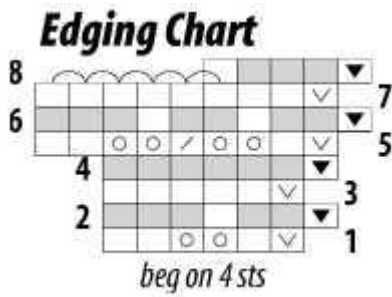
*Joining St:* With WS of afghan facing, pick up and p 1 st from afghan edge, pass last k st over picked-up st, turn.

*Edging Chart:* Beg on 4 sts

*Note:* Sl sts knitwise with yarn in back.

*Row 1 (RS)* Sl 1, k1, [yo] twice, k2? sts. 2 K3, p1, k2, joining st. 3 Sl 1, k5. 4 K6, joining st. 5 Sl 1, k1, [yo] twice, k2tog, [yo] twice, k2? sts. 6 K3, [p1, k2] twice,

joining st. 7 Sl 1, k8. 8 Bind off 5 sts, k3, joining st? sts. Rep rows 1-8 for Edging Chart.



- K on RS, p on WS
- K on WS
- Yarn over
- K2tog
- Sl st knitwise with yarn in back
- Joining st
- Bind off 1 st



**Knitter's 52 - Smoky Skies Cardigan**, p. 86. Yarn should be Isis and content is 100% viscose.

## Knitter's 52 - Great North American Afghan *In Other Words by Kathleen Power Johnson*

*Designer: Kathleen Power Johnson*

From Page 29, In Knitter's Magazine, Issue #52, Fall '98

**MAKE BOBBLE (MB)** K into [front and back] twice of st, turn; sl 1 p3, turn; sl 1 k3, turn; sl 1, p3 turn; sl 2 tog knitwise, k2 tog, p2sso..

**CHART A** BEG ON 1 ST

**Row 1 (RS)** Yo, k1. **2** Yo, k2. **3-21** Yo, k to end. **22, 24** Yo, k2, \*yo, k2tog; rep from\* to last 2 sts, k2. **23 and all foll RS rows** Yo, k to end. **26** Yo, k12, yo, k2tog, k12. **28** Yo, k12, [yo, k2tog] twice, k12. **30-64** Cont as established, working 1 more [yo, k2tog] in center on WS rows. **66, 68** Yo, k4, \*yo, k2tog; rep from\* to last 4 sts, k4. **70** Ssk, k to end -- 69 sts.



## CHART B BEG ON 69 STS

**Note** Sl all sts purlwise with yarn in front.

**Row 1** (RS) Sl 1, ssk, k2, p9, [k1, p7] 6 times, p3, k4. **2** Sl 1, ssk, k11, [p1, k7] 6 times, k6. **3** Sl 1, ssk, k2, p8, [M1, k1, M1, p7] 6 times, p2, k4. **4** Sl 1, ssk, k10, [p3, k7] 6 times, k5. **5** Sl 1, ssk, k2, p7, [(k1, yo) twice, k1, p7] 6 times, p1, k4. **6** Sl 1, ssk, k9, [p5, k7] 6 times, k4. **7** Sl 1, ssk, k2, p6, [k2, yo, k1, yo, k2, p7] 6 times, k4. **8** Sl 1, ssk, k8, [p7, k7] 6 times, k3. **9** Sl 1, ssk, k2, [p5, k2, S2KP2, k2, p2] 6 times, p4, k4. **10** Sl 1, ssk, k7, [p5, k7] 6 times, k2. **11** Sl 1, ssk, k2, [p4, k1, S2KP2, k1, p3] 6 times, p2, k4. **12** Sl 1, ssk, k6, [p3, k7] 6 times, k1. **13** Sl 1, ssk, k2, [p3, S2KP2, p4] 6 times, k4. **14** Sl 1, ssk, k5, [p1, k7] 6 times -- 55 sts. **15, 17, 19, 20** Sl 1, ssk, k to end. **16, 18** Sl 1, ssk, k3, \*yo, k2tog; rep from\* to last 4 sts, k4. **21** Sl 1, ssk, k2, p11, [k1, p7] 3 times, p5, k4. **22** Sl 1, ssk, k13, [p1, k7] 3 times, k8. **23** Sl 1, ssk, k2, p10, [M1, k1, M1, p7] 3 times, p4, k4. **24** Sl 1, ssk, k12, [p3, k7] 3 times, k7. **25** Sl 1, ssk, k2, p9, [(k1, yo) twice, k1, p7] 3 times, p3, k4. **26** Sl 1, ssk, k11, [p5, k7] 3 times, k6. **27** Sl 1, ssk, k2, p8, [k2, yo, k1, yo, k2, p7] 3 times, p2, k4. **28** Sl 1, ssk, k10, [p7, k7] 3 times, k5. **29** Sl 1, ssk, k2, p7, [k2, S2KP2, k2, p7] 3 times, p1, k4. **30** Sl 1, ssk, k9, [p5, k7] 3 times, k4. **31** Sl 1, ssk, k2, p6, [k1, S2KP2, k1, p7] 3 times, k4. **32** Sl 1, ssk, k8, [p3, k7] 3 times, k3. **33** Sl 1, ssk, k2, p5, [S2KP2, p7] twice, S2KP2, p6, k4. **34** Sl 1, ssk, k7, [p1, k7] 3 times, k2 -- 35 sts. **35-40** Rep rows 15-20 -- 29 sts. **41** Sl 1, ssk, k to end. **42 and all foll WS rows** Rep row 41. **43** Sl 1, ssk, k4, [MB, k3] 4 times, k4. **45** Sl 1, ssk, k5, [MB, k3] 3 times, k5. **47** Sl 1, ssk, k2, [MB, k3] 4 times, k2. **49** Sl 1, ssk, k3, [MB, k3] 3 times, k3. **51** Sl 1, ssk, k4, [MB, k3] twice, k4. **53** Sl 1, ssk, k5, MB, k8. **55** Sl 1, ssk, k2, [MB, k3] twice, k2. **57** Sl 1, ssk, k3, MB, k6. **59, 61, 63, 65** Sl 1, ssk, k to end. **67** S2KP2 -- 1 st.

## Knitter's 52 - Cables for Two

# Machine Knitting Instructions for Takako Ondo's Cables for Two sweaters & caps

*Designer: Takako Ondo*

From Page 36-39, In Knitter's Magazine, Issue #52, Fall '98



### Machine knitting abbreviations:

**B/O** Bind off

**Carr** Carriage

**C/O** Cast on

**EOS** Every other stitch

**HP** Holding position

**NWP** Non-working position

**RC** Row count (er)

**S/O** Scrap off

(k several rows with WY and drop from machine)

**SS** Stitch size

**TR** Transfer(ring)

**WP** Work position

**WY** Waste yarn

**Notes:** **1** Chart symbols resemble RS of fabric. Since WS of fabric shows on machine, reform p sts on chart. **2** Reform sts every few rows to conform to chart. **3** Ribbing is worked after pieces are completed.

## CHILD'S CARDIGAN

### Back

With WY, C/O 76 (82, 90, 100) sts and k some rows. Change to ecru and SS 5.5. Work Chart A to RC 58 (62, 68, 80). Mark armhole at each side. Work to RC 102 (110, 132, 146).

### Shape neck

With carr on right and set to hold ndls in HP, hold center 24 (26, 28, 30) ndls and all ndls to left of them. K 1 row and wrap edge ndl, then [B/O 2 sts at neck edge; k 2 rows] twice. K 3 rows. RC 110 (118, 140, 154). S/O all 22 (24, 27, 31) shoulder sts and center neck sts separately. Rep for other side.

### Fronts

**Note:** Knit 2 with reverse shapings. With WY, C/O 39 (42, 46, 51) sts and k some rows.

Change to ecru and SS 5.5. Work Chart A to RC 58 (62, 68, 80). Mark armhole. Work to RC 90 (98, 106, 120).

### Shape front neck

B/O 4 (5, 5, 5) sts once, 3 sts 1 (1, 2, 3) times, 2 sts 4 (4, 3, 2) times, 1 st twice. K even to RC 110 (118, 140, 154). S/O all 22 (24, 27, 31) sts.

### Sleeves

With WY, C/O 48 (50, 52, 54) sts and k some rows. With ecru, work Chart A, AT SAME TIME, inc 1 st each edge every 4th row 10 (14, 9, 10) times, every 6th row 4 (2, 6, 7) times.

Work to RC 72 (76, 80, 90). S/O all 76 (82, 82, 88) sts.

### **Finishing**

Block pieces.

### **Ribbing**

Rehang each piece separately with WS facing you. (For sleeves, dec 6 sts evenly across row -- 42 (44, 46, 48) sts.) At SS 3, k 15 rows; reform EOS into a k st. Cut ecru, leaving a tail twice the width of the knitting. Bring ndls holding reformed sts to HP. Set carr to sl ndls in WP and k ndls in HP. K 1 row with WY. Set carr to k all ndls and k 10 more rows with WY to S/O. Lightly press WY only. B/O by tubular B/O with a tapestry needle.

### ***B/O shoulder sts tog***

Rehang sts on machine with RS facing you. Fold back WY and rehang 22 (24, 27, 31) back shoulder sts. Bring ndls to HP with sts behind latches. With WS facing you, fold back WY to rehang sts of corresponding front into hooks of same ndls. Use ndl pusher to push ndls back to WP, thus pulling front shoulder sts through back shoulder sts. B/O loosely. Rep for 2nd shoulder.

### ***Join sleeves to body***

Rehang entire armhole edge back on machine as foll: With RS facing you and working 1 full st from edge and between armhole markers, rehang entire armhole edge over 76 (82, 82, 88) sts. Center shoulder seam at zero on bed. Bring ndls to HP with sts behind latches. With WS facing you, fold back WY and rehang top of sleeve sts into hooks of same ndls. Push ndls back to WP to pull sleeve sts through body sts, then B/O with backstitch method.

### ***Neckband***

With WS facing, bring 83 (87, 91, 95) ndls to WP to rehang entire neckline of garment. K 10 rows at SS 3, reforming EOS. B/O as before.

### ***Front bands***

With WS facing, rehang right front edge onto 99 (105, 111, 123) needles for buttonhole band. K 5 rows at SS 3, reforming EOS. Make 8 (8, 9, 9) evenly spaced buttonholes by TR 1 st to adjacent ndl; leave empty ndl in WP. K and reform 5 more rows. B/O as before. Work buttonband on left front, omitting buttonholes. Sew side and sleeve seams. Sew on buttons.

## **CHILD'S HAT**

With WY, cast on 114 (114, 128, 128) sts and k some rows. Change to ecru and SS 5.5. Knit 23 (23, 31, 31) rows of Chart A. \*S/O. Push 4 ndls at each edge back to NWP. Rehang the piece on rem ndls, doubling 1 st in each plain (uncabled area)\* -- 106 (106, 119, 119) sts. [K 3 rows; rep between \*'s once] 4 times. K 4 rows. K 1 row with SS 8 and B/O with latch tool. Block lightly. Rehang lower edge over 114 (114, 128, 128) ndls and k 6 rows rib. B/O as before. Join side seam.

### ***Make I-cord***

Set carr to k in one direction and sl in the other. Make a 27" I-cord. Thread cord through sts at top of hat, just above last cabled row. Make 2 tassels. Attach one to each cord.

## **DOLL'S CARDIGAN**

### **Back**

With WY, C/O 46 sts and k some rows. With ecru and SS 5.5, k 27 rows Chart B. Mark

armhole at each side. K to RC 44.

### **Shape shoulders**

Set carr to hold ndls in HP. With carr on right, hold center 12 ndls and all ndls to left of them. K 1 row and wrap edge ndl, then use 2 prong TR tool to dec 2 sts at neck edge (double dec) at beg of next 2 rows. K 1 row (RC 48) with ecru then S/O rem 13 sts. Rep for 2nd shoulder.

### **Fronts**

**Note:** Knit 2 with reverse shapings. With WY, C/O 22 sts and k some rows. Change to ecru and SS 5.5. Work Chart A to RC 27. Mark armhole. Work to RC 40.

### **Shape front neck**

B/O at neck edge 4 sts once, 2 sts twice, 1 st once. End RC 48. S/O rem 13 sts.

### **Sleeves**

With WY, C/O 28 sts and k some rows. With ecru and SS 5.5, k pat for 27 rows, inc 1 st at each edge every 4th row 5 times. S/O all 38 sts.

### **Finishing**

Block pieces.

### **Ribbing**

Rehang each piece separately with WS facing you. K 6 rows at SS 3. Complete as for child's cardigan. Join shoulder seams. Join sleeve to garment same as for child's cardigan, rehang armhole edge over 38 ndls.

### **Neckband**

Pick up 43 sts evenly around neck edge. K 5 rows at SS 3, reform and complete as before.

## **DOLL'S HAT**

With WY, C/O 72 sts and k some rows. Change to ecru and k 9 rows Chart C at SS 5.5.

[\*S/O. Push 7 ndls back to NWP. Rehang sts, dec 1 st at one edge of each St st section.\* K 3 rows. Rep between \*'s once. K 1 row.] twice. Rep between \*'s once more. K 4 more rows in pat, then B/O loosely. With WS facing you, rehang lower edge over 72 ndls to k 6 rows rib.

## **DOLL'S SKIRT**

C/O 111 sts. K 10 rows Chart C at SS 5.5. [\*S/O. Push 5 ndls at each side back to NWP. Rehang sts on rem ndls, doubling 1 st in each plain St st section.\* K 11 rows.] twice. Rep between \*'s once. K 7 rows in chart pat, then S/O 82 sts.

### **Waistband**

With WS facing you, rehang top edge of skirt over 62 ndls, doubling 20 sts evenly across width. K 10 rows with SS 5.5. S/O.

### **Finishing**

Block piece. Fold waistband in half and sew to WS by hand. Sew back seam. Insert elastic in waistband and sew opening. Fold back WY at lower edge to work 1 row sc.

## **Knitter's 51 - Great North American Afghan**

*In Other Words, by Zabeth Loisel Weiner*

*Designer: Zabeth Weiner*

From Page 21, In Knitter's Magazine, Issue #51, Summer '98

**K1 TBL** K 1 st through back loop.

**MAKE BOBBLE (MB)** K into front, back, front of a st, turn, p3, turn, k3, turn, p3, turn, k3, pass 2nd and 3rd sts over first st and off needle.

**S2KP** Sl last 2 sts of rep tog knitwise, k first st of next rep, p2sso.

**S2PP** Sl last 2 sts of rep tog purlwise, p first st of next rep, p2sso.

**1/1 TWIST RPC** Sl 1 to cn, hold to back, k1 tbl; p1 from cn.

**1/1 TWIST LPC** Sl 1 to cn, hold to front, p1; k1 tbl from cn.

**1/2 TWIST LC** Sl 2 to cn, hold to front, k1 tbl; sl last st from cn to LH needle and k1 tbl; then k1 tbl from cn.

**2/1 RPC** Sl 1 to cn, hold to back, k2; p1 from cn.

**2/1 LPC** Sl 2 to cn, hold to front, p1; k2 from cn.

**2/1 TWIST RC** Sl 1 to cn, hold to back, k2; k1 tbl from cn.

**2/1 TWIST LC** Sl 2 to cn, hold to front, k1 tbl; k2 from cn.

**3/1 RIB RC** Sl 1 to cn, hold to back, k1, p1, k1; p1 from cn.

**3/1 RIB LC** Sl 3 to cn, hold to front, p1; k1, p1, k1 from cn.

**2/3 TWIST LC** Sl 3 to cn, hold to front, k2; sl last st from cn to LH needle and k1 tbl; then k2 from cn.

**2/3 TWIST LPC** Sl 3 to cn, hold to front, k2 tbl; sl last st from cn to LH needle and p1; then k2 tbl from cn.

**2/3 LPC** Sl 3 to cn, hold to front, k2; sl last st from cn to LH needle and p1; then k2 from cn.

**3/4 RIB LC** Sl 4 to cn, hold to front, k1, p1, k1; sl last st from cn to LH needle and p1; then k1, p1, k1 from cn.



## **CHART** beg on 216 sts

**Note** Work with MC unless indicated otherwise.

**Rnd 1** Knit. **2** K1, \*p51, S2PP; rep from\* 3 times more. **3** Knit. **4** K1, \*p49, S2PP; rep from\* 3 times more. **5** Knit. **6** K1, \*p47, S2PP; rep from\* 3 times more. **7** Knit. **8** K1, \*k18, [p1, k1] 4 times, p1, k18, S2PP; rep from\* 3 times more. **9** Knit. **10** K1, \*p18, 3/4 Rib LC, p18, S2KP; rep from\* 3 times more. **11** \*[P1, k1 tbl] 4 times, [p1, k12] twice, [p1, k1 tbl] 4 times, p1, k1; rep from\* 3 times more. **12** P1, \*[k1 tbl, p1] 4 times, k7, p1, 3/1 Rib RC, k1, 3/1 Rib LC, p1, k7, [p1, k1 tbl] 4 times, S2KP; rep from\* 3 times more. **13** \*[K1 tbl, p1] 4 times, k11, p1, k1, p1, k11, [p1, k1 tbl] 4 times, k1; rep from\* 3 times more. **14** K1 tbl, \*[p1, k1 tbl] 3 times, p1, k6, p1, 3/1 Rib RC, k3, 3/1 Rib LC, p1, k6, [p1, k1 tbl] 3 times, p1, S2KP; rep from\* 3 times more. **15** \*P1, [k1 tbl, p1] 3 times, k10, p1, k3, p1, k10, [p1, k1 tbl] 3 times, p1, k1; rep from\* 3 times more. **16** P1, \*[k1 tbl, p1] 3 times, k5, p1, 3/1 Rib RC, k5, 3/1 Rib LC, p1, k5, [p1, k1 tbl] 3 times, S2KP; rep from\* 3 times more. **17** \*[K1 tbl, p1] 3 times, k9, p1, k1, p3, k1, p1, k9, [p1, k1 tbl] 3 times, k1; rep from\* 3 times more. **18** K1 tbl, \*p1, [k1 tbl, p1] twice, k4, p1, 3/1 Rib RC, k2, with CC, p3, with MC, k2, 3/1 Rib LC, p1, k4, [p1, k1 tbl] twice, p1, S2KP; rep from\* 3 times more. **19** \*P1, [k1 tbl, p1] twice, k8, p1, k7, p1, k8, [p1, k1 tbl] twice, p1, k1; rep from\* 3 times more. **20** P1, \*[k1 tbl, p1] twice, k3, p1, 3/1 Rib RC, k9, 3/1 Rib LC, p1, k3, [p1, k1 tbl] twice, S2KP; rep from\* 3 times more. **21** \*[K1 tbl, p1] twice, k7, p1, k9, p1, k7, [p1, k1 tbl] twice, k1; rep from\* 3 times more. **22** K1 tbl, \*p1, k1 tbl, p1, k2, p1, 3/1 Rib RC, k1, p3, k3, p3, k1, 3/1 Rib LC, p1, k2, p1, k1 tbl, p1, S2KP; rep from\* 3 times more. **23** \*P1, k1 tbl, p1, k6, p1,

k1, with CC, p3, with MC, k3, with CC, p3, with MC, k1, p1, k6, p1, k1 tbl, p1, k1; rep from\* 3 times more. **24** P1, \*k1 tbl, p1, k1, p1, 3/1 Rib RC, k4, 2/3 Twist LC, k4, 3/1 Rib LC, p1, k1, p1, k1 tbl, S2KP; rep from\* 3 times more. **25** \*K1 tbl, p1, k5, p1, k3, 2/1 RPC, k1 tbl, 2/1 LPC, k3, p1, k5, p1, k1 tbl, k1; rep from\* 3 times more. **26** K1 tbl, \*p2, 3/1 Rib RC, k3, 2/1 Twist RC, p1, k1 tbl, p1, 2/1 Twist LC, k3, 3/1 Rib LC, p2, S2KP; rep from\* 3 times more. **27** \*P1, k4, p1, k2, 2/1 RPC, [k1 tbl, p1] twice, k1 tbl, 2/1 LPC, k2, p1, k4, p1, k1; rep from\* 3 times more. **28** P1, \*3/1 Rib RC, k2, 2/1 Twist RC, [p1, k1 tbl] 3 times, p1, 2/1 Twist LC, k2, 3/1 Rib LC, S2KP; rep from\* 3 times more. **29** \*K3, p1, k1, 2/1 RPC, [k1 tbl, p1] 4 times, k1 tbl, 2/1 LPC, k1, p1, k4; rep fom\* 3 times more. **30** K1, \*p1, k1, p1, 2/1 RPC, [p1, k1 tbl] 5 times, p1, 2/1 LPC, p1, k1, p1, S2KP; rep from\* 3 times more. **31** \*K2, p1, k2, p2, [1/1 Twist LPC] twice, k1 tbl, [1/1 Twist RPC] twice, p2, k2, p1, k3; rep from\* 3 times more. **32** P1, \*k1, p1, k2, p3, 1/1 Twist LPC, 1/2 Twist LC, 1/1 Twist RPC, p3, k2, p1, k1, S2KP; rep from\* 3 times more. **33** \*K1, p1, 2/1 LPC, p3, k5 tbl, p3, 2/1 RPC, p1, k2; rep from\* 3 times more. **34** K1, \*p2, k2, p3, k2 tbl, with CC, MB, with MC, k2 tbl, p3, k2, p2, S2KP; rep from\* 3 times more. **35** \*P2, 2/1 LPC, p2, k5 tbl, p2, 2/1 RPC, p2, k1; rep from\* 3 times more. **36** P1, \*p2, k2, p2, 2/3 Twist LPC, p2, k2, p2, S2KP; rep from\* 3 times more. **37** \*P2, 2/1 LPC, [p1, k2 tbl] twice, p1, 2/1 RPC, p2, k1; rep from\* 3 times more. **38** P1, \*p2, k2, [p1, k2 tbl] twice, p1, k2, p2, S2KP; rep from\* 3 times more. **39** P1, \*p1, 2/1 LPC, k2 tbl, p1, k2 tbl, 2/1 RPC, p1, S2KP; rep from\* 3 times more. **40** P1, \*p1, 2/1 LPC, k1 tbl, p1, k1 tbl, 2/1 RPC, p1, S2KP; rep from\* 3 times more. **41** P1, \*p1, 2/1 LPC, p1, 2/1 RPC, p1, S2KP; rep from\* 3 times more. **42** P1, \*p1, 2/3 LPC, p1, S2KP; rep from\* 3 times more. **43** P1, \*k2, p1, k2, S2KP; rep from\* 3 times more.