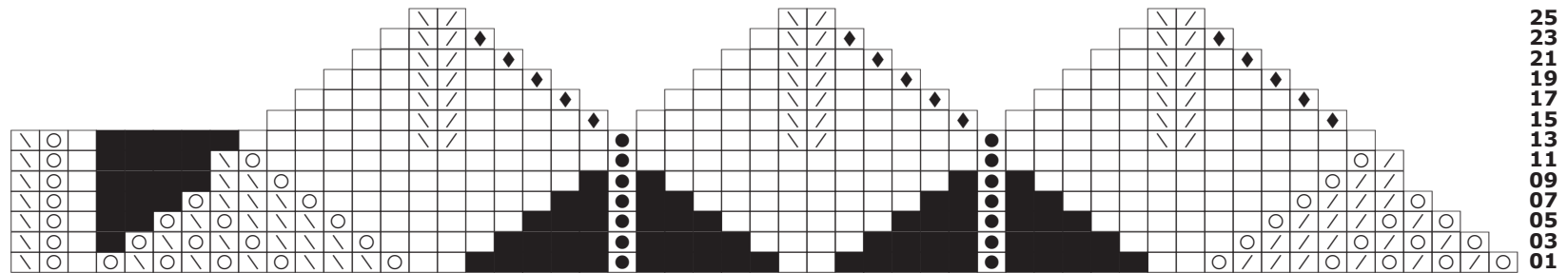


Chart typed in Verdana Bold (8pts, 8-pt leading)

```

      \      \      \
     a\ /  a\ /  a\ /
    aa\ /  aa\ /  aa\ /
   aaa\ /  aaa\ /  aaa\ /
  aaaa\ /  aaaa\ /  aaaa\ /
 aaaaa\ /  aaaaa\ /  aaaaa\ /
\oaCCCCaaaaaa\ / aaaaaOaaaaa\ / aaaaaOaaaaa\ / aaaaa
\oaCCCC\ oaaaaaaaaaaaaaOaaaaaaaaaaaaaOaaaaaaaaaaaao /
\oaCCCC\ oaaaaaaaaaaaaCOcaaaaaaaaaCOcaaaaaaaaaoo //
\oaCCCo\ \ oaaaaaaaaCOCCaaaaaaaaCOCCaaaaaaaaoo // o
\oaCCo\ o\ \ oaaaaaCCCOCCcaaaaaCCCOCCcaaaaaoo // o/o
\oaCo\ o\ o\ \ oaaaaCCCOCCcaaaaaCCCOCCcaaaaaoo // o/o/o
\oaoo\ o\ o\ o\ \ oaaCCCCCOCCcaaaCCCCCOCCcaao // o/o/o/o
    
```

Verdana chart changed to KSymbolsW (Row numbers and key added later)



- = k (type **a**)
- = yo (type **o**)
- = ssk (type ****)
- = k2tog (type **/**)
- = yo; on following row k1-p1 into yo (type **Shift + O**)
- = slip purlwise; p on following row (type **Shift + Option + B** [Sorry, Windows people! <g>])
- = no stitch (type **Shift + C**)