



# K104

## Take it from the Top

### Corrections & Clarifications

Do you have a question about a Knitter's pattern? If you've already checked out Knitter's Corrections & Clarifications, then email us. We would love to hear from you or just post a question at [knitalk.com](http://knitalk.com), and we'll do our best to answer it.

**Page 52, 'Mulberry Cascade'** Due to a lack of clarity in this pattern, see the following 2 pages with a better approach to this beautiful piece (including a revised Chart D).

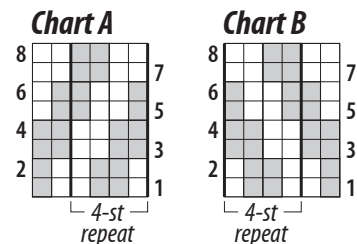
**Page 72, 'Artichoke twist' under Sleeves,** the ***Increase round*** stitch count should read 50 (50, 50, 50, **58, 58, 58**). Then repeat increase round every 4 rounds 1 (1, 1, 1, **0, 7, 7**) more times, every 6 rounds 0 (0, 7, 14, **13, 8, 10**) times, . . .

**Page 76, 'Cables in Camel'** the **rights** and **lefts** need to switch as follows: Under **Yoke, Round 1** K22 (26, 28, 30) for **right** back, pm, k28 (26, 28, 30) for **right** sleeve, pm, k44 (52, 56, 60) for front, pm, k28 (26, 28, 30) for **left** sleeve, pm, knit to end for **left** back.

And under ***Divide for body and sleeves,*** ***Next round*** Work to first marker, remove marker (rm), place next 46, (48, 48, 52) on hold for **right** sleeve, cable cast on 19 (19, 22, 22) work to next marker, rm, place next 46 (48, 48, 52) on hold for **left** sleeve, cable cast on 19 (19, 22, 22), work to end—162 (186, 196, 208) stitches..

**Page 85, 'Autumn Delight' Charts** are the same as for 'Woodsman' **page 84**.

**Page 92, 'Take Me Anywhere'** corrected **Charts** below.



Leaves cascade down the length of this exquisite silk trio. Knit from the top down, either jacket is an elegant trans-seasonal layer. Add the cowl for even more versatility.

designed by  
Brooke Nico

# Mulberry cascade

## Chart notes

Only RS rows are charted. **WS rows** Knit the knits, purl the purls and yo's.

On Charts C and D, row numbers in black are for Short Jacket. Row numbers in blue are for Long Jacket only.

## Stitch key

- Knit on RS, purl on WS
- Purl on RS, knit on WS
- Yarn over (yo)
- K2tog
- SSK
- K3tog
- Sl 1-k2tog-ssso (SK2P)
- K7tog through back loop (tbl)
- Sl 2tog knitwise-k1-p2ssso (S2KP2)
- [K1-yo-k1] into 1 stitch

## JACKET

Using a temporary cast-on and waste yarn, cast on **193** (237, **281**, 325).

### Yoke

**Set-up row** With larger needle and main yarn, k2, work Row 1 of Chart A to last 2 stitches, k2. Work 11 rows of Chart A **1** (2, 3, 3) times.

**Remember to keep first 2 and last 2 stitches of all rows in stockinette stitch (K on RS, purl on WS).**

Work Chart B, Rows 1–51 — **295** (363, **431**, 499) stitches.

Divide for body and sleeves

**Row 52** P2, [k2, p15] 2 (3, 3, 4) times, k2, p11 (3, 11, 3), place **49** (66, **83**, 100) on hold for right Sleeve, cast on 15, p6 (14, **6**, 14) [k2, p15] 5 (5, 7, 7) times, k2, p6 (14, **6**, 14), place **49** (66, **83**, 100) on hold for left Sleeve, cast on 15, p11 (3, 11, 3), [k2, p15] 2 (3, 3, 4) times, k2, p2 — **227** (261, **295**, 329) stitches.

### Body

Work Chart C, Rows 1–44 — **253** (291, **329**, 367) stitches.

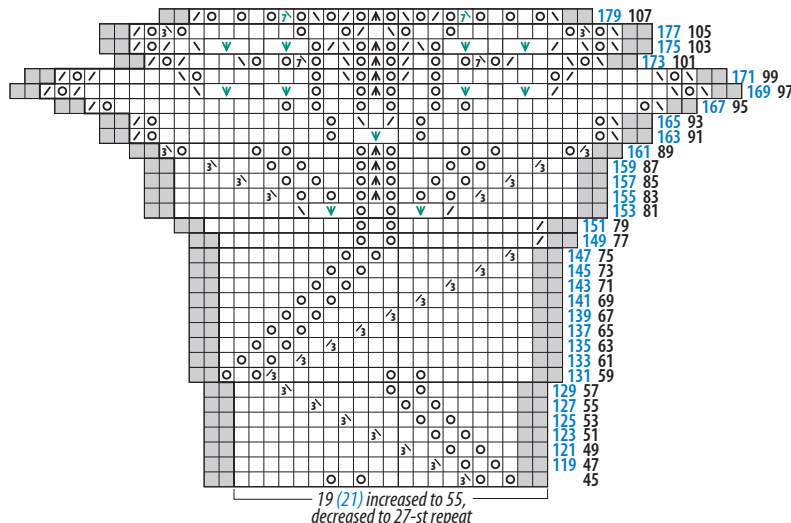
### Short Jacket

Work Chart D, Rows 45–107 — **357** (411, **465**, 519) stitches. Bind off on Row 108.

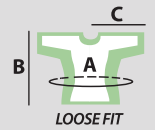
### Long Jacket

Continue Chart C, Rows 45–118 — **279** (321, **363**, 405) stitches, then work Chart D, Rows 119–179 — **357** (411, **465**, 519) stitches. Bind off on Row 180.

## Chart D



## INTERMEDIATE



**S** (M, L, 1X)

**A** 40 (46, 52, 58)"

**B short** 24 (25, 26, 26)"

**B long** 33 (34, 35, 35)"

**C** 23 (24, 25, 26)"

**10cm/4"**



**24**

over stockinette stitch, using **larger needles** One repeat of Chart E (17 stitches, 20 rows), measures 3" wide x 2" tall, washed and blocked.



**Fine weight**

**Short**

**1250** (1475, **1825**, 2175) yds

**Long**

**1600** (1875, **2250**, 2675) yds

**Cowl**

**275** yds



**3.5mm/US4**, 60cm (24") or longer  
2.75mm/US2, 60cm (24") or longer



**3.5mm/US4**



**3.75mm/F-5**



**&**  
stitch markers  
waste yarn



**Short** 5 **16mm** (5/8")  
**Long** 7 **16mm** (5/8")

## NOTES

See *School*, page 96, for abbreviations and techniques.

*There was much confusion in trying to work this pattern. We apologize for the lack of clarity in the pattern as it appeared in the magazine. It is such a beautiful design, that one shouldn't need to struggle through the instructions.*

*To assist in making things clearer here is a better approach.*

*Of note is the addition of a set up row in the yoke, the division of sleeve stitches from body stitches are placed on a wrong side row instead of a RS row (where the stitch work is less demanding). Which follows, that the sleeve pick up and set up are also different than the original pattern. This is truly an easier approach to the piece and will provide the same results.*

Rick Mondragon  
Knitter's Editor

Jackets are knit from the top down. A temporary cast-on allows the knitter to block the jacket before working the neck band.

In the edging lace motif, the k7tog through the back loop is easy to achieve using a crochet hook as follows: insert crochet hook into back of the the next 7 stitches from right to left, yarn over hook and pull through all 7 stitches, place loop on right needle.

Instructions are given for both jackets together. Please be sure to note the row numbers for your chosen length of jacket.

Bind off loosely and in pattern.

**RIB A** MULTIPLE OF 3 + 2

**WS rows** [P2, k1] p2.

**RS rows** [K2, p1] k2.

**RIB B** MULTIPLE OF 2 + 1

**WS rows** P2, [k1 p1] to last stitch, p1.

**RS rows** K2, [p1, k1] to last stitch, k1.

### Sleeve

Sleeves are worked in the round with RS facing.

#### Right Sleeve

Join yarn at right front underarm, and with RS facing, pick up and knit (PUK)19 stitches from underarm cast on as follows: **[PUK3, loop cast on 1]** 4 times, PUK3; work from holder as follows: K9 (1, 9, 1), **[p2, k15] 2** (3, 4, 5) times, p2, k4 (12, 4, 12) then work along stitches just picked up as follows: K11 (3, 11, 3), p2. Place marker (pm) for beginning of round—68 (85, 102, 119) stitches. Place marker for beginning of round and join.

Work Chart E in rounds; working stitches in even numbered rounds as they present themselves and knit yo's. Work Rounds 1–20 of Chart E 5 times, or until desired Sleeve length. Bind off on Row 20. Block.

#### Left Sleeve

Join yarn at left back underarm, and with RS facing, (PUK)19 stitches from underarm cast on as follows: **[PUK3, loop cast on 1]** 4 times, PUK3; work from holder as follows: K4, **[p2, k15] 2** (3, 4, 5) times, p2 k9 (1, 9, 1); then work along stitches just picked up as follows: K6 (14, 6, 14), p2. Pm for beginning of round. Work Chart E as for Right Sleeve.

### Finishing

#### Neckband

Remove waste yarn from cast-on, and place 192 (236, 280, 324) stitches on smaller circular needle. Join yarn at beginning of RS row.

**Decrease row 1** K7, **[k2tog k9]** to last 9 stitches, k2tog, k7—175 (215, 255, 295). Work 2 rows stockinette. **Decrease row 2** K2, **[k2tog,k3]** to last 3 stitches, k2tog, k1—140 (172, 204, 236) stitches.

*SMALL ONLY* Work Rib A for 11 rows.

*M (L, 1X) ONLY* **Next row** Purl. **Decrease row 3** K8 (4, 2) **[k2tog,k3]** to last 9 (5, 4), k2tog, k7 (3, 2)—140 (164, 189) stitches.

*M (L) ONLY* Work Rib A for 11 rows.

*1X ONLY* **Next row** Purl. **Decrease row 4** K2, k2tog, k2, **[k2 tog, k6]** to last 7 stitches, k2tog, k2, k2tog, k1—164 stitches. Work Rib A for 11 rows.

*FOR SHORT JACKET, ALL SIZES* Bind off in pattern.

*FOR LONG JACKET* Continue Rib A for a total of 16 rows. **Next row (RS)** K2, **[p1, K2tog]** to last 3 stitches, p1, k2. Continue with Rib B for 6 rows. Bind off in pattern.

#### Front Bands

With smaller needle and RS facing, PUK as follows:

##### Buttonband

Along Left Front edge, for Short Jacket PUK126 (134, 142, 150). For Long Jacket PUK186 (194, 202, 210). For both, work 8 rows K2, P2 rib. Bind off.

##### Buttonhole band

Along Right Front edge, pick up as for Buttonband. **Next row (WS)** **[p2, k2, p2, yo, k2tog]** 5 times (for short jacket) or 7 times (for long jacket), work to end. Continue as for Buttonband.



Small: SKACEL  
COLLECTION/ZITRON  
Filisilk in colors 3012  
Evergreen (long version)  
and 3016 Amost Black  
(short version & cowl)