

Shawls & Scarves

from traditional to trendy

Corrections & Clarifications

First Printing 1999

Page 18 Stonington Shawl

First Border, Row 1:

K2, yo, k to last st,wyif, sl last st as if to p.

Second Side, third sentence:

*. . .Work same as first side, except that instead of *sl last st* at F-C, you will work *last st tog with next* picked up st from F-C each time you come to them: Row 1 Working from A to C, *k2, yo, k to last A-C st, k last st tog with next FC st*; turn, leaving rem sts unworked. 2 *K2, yo, k to last st, wyif, sl last st.* 3 *K2, yo, k to last worked st, k last worked st tog with next F-C st, turn.* Rep rows 2 and 3, *working last worked st tog with next unworked F-C st* each time, . . .*

Fourth side should read as foll:

Work same as second and third side, except join to both first side at D-E and to third side at B-H: With same side of shawl facing, beginning at E, and using a spare needle, pick up E-D bumps. Continuing with same strand of wool as for third side, pick up and k sts along H-B, then B-D as for other sides,working last B-D st tog with next picked up st from E-D; turn, leaving

rem sts unworked. Row 1 Working from D to B, *k2, yo, k to last D-B st, k last st tog with next H-B st*; turn, leaving rem sts unworked. 2 *K2, yo, k to last worked st, k last worked st tog with next E-D st, turn.* Rep rows 1 and 2 until all picked up sts and bumps. . .

Page 21 Snow Drops & Snowflakes

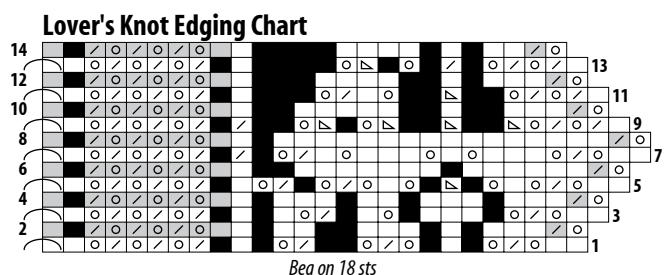
Row 6 should read:

K1, [k2tog, yo] 3 times, k1, p14, k2tog, yo.

Lover's Knot Edging Chart:

Row 6 should have a black box above the SK2P on row 5. See corrected chart below.

Page 38 Yellow shawl gusset chart



*On row 65 we need to put * on right and left side of row. On row 65 we need to put a K2tog in first square on the right. On row 65 we need to put an SSK in the first square on the left. On row 63 we need to take off the *on the left and right side*

of the row. *On row 63* the first and last square need to be blank.

Page 38 Yellow Shawl

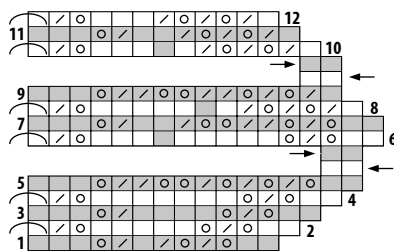
Under Additional shapings, *third line should read* ...through Row 65—185 sts. *Forth line should read*...st at beg and end of each main section... *Fifth line should read*...shapings on WS rows as foll: Row 90 (WS) work 6-st selvage, k3, *Sixth line should read*...7 times, k17, [k5, k2tog] 7 times, k3, work 6-st selvage...104 (WS) Work selvage, k1, [k2tog, k3] 6 times, k15, [k3, k2tog] 6 times, k1, work selvage... *Seventh line should read*...114 (WS) Work 4-st selvage, [k1, k2tog] 5 times, k13, [k2tog, k1] 5 times, work 4-st selvage... *Tenth line should read*...tog, k8—18sts.

Page 39 Faroese shawls

Right main section chart On Row 5 the 5th square from the right needs to be blank. *On Row 7* the 4th and 5th square from the right needs to be blank. *On Row 9* the 4th and 5th square from the right needs to be blank. *On Row 65* the second square from the left needs to be a K2tog. *Chart Notes, Note 2 Second line needs to read*...end of Gusset section, then read main section again from left to right,...

Page 44 More Than Circular

The finished measurements for the white shawl should be approx 44-48" diameter instead of 62".



Page 47

Rnd 76 Knit.

Page 52 The Pi Shawl

Row 11 should read:

K2, *yo, k2tog, k3, ssk, yo, k2, ssk, yo, k9, yo, k2tog, k2 (instead of yo); rep from* . . .

Page 58 Mañanita Magic

Shawl, fourth sentence:

On foll rnd, work 18 sts into triple yo as foll: [k1, p1] 3 times into each yo (18 sts made). . . .

In Other Words, row 8 should read:

8 *K1, [k1, p1] 3 times into each yo (18 sts made), . . .

Page 62 Garter and Lace

Chart, Row 9:

A double yarn over is missing! The 2 gray squares between the 2 pairs of k2tog should be 2 yo's. See corrected chart right. Also, the shawl has a bit of a mystery. Someone recently pointed out that for the number of sts (433), there would be 36 chart reps on each side for the edging. But looking at the photograph, it looks more like there are 18, as the pattern states. Since the time this pattern was originally printed in the magazine, Meg Swansen has given away the shawl. So there is no way to look at what was really done. This is the first time this has come to our attention after all these years! So for those of you who have made this shawl, we would love to hear how your shawl turned out!

Chart D

The Even rows should begin with a gray square, making those rows completely gray. The written instructions for these charts are correct. See corrected charts below.

Chart A

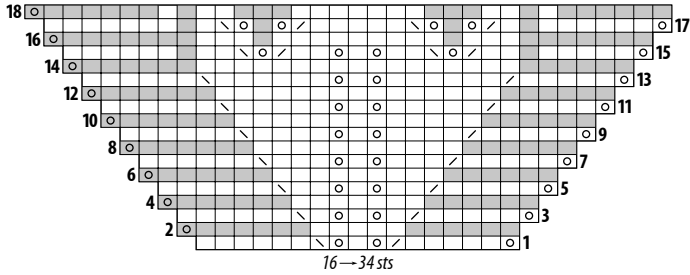


Chart B

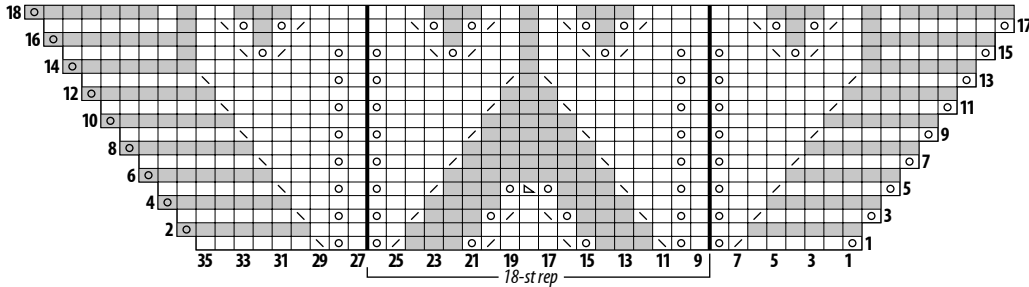
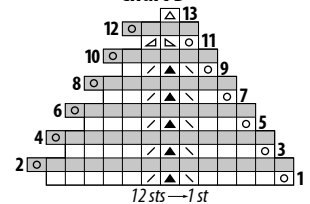


Chart D



Page 68, 69 Lotus Blossom Lace Charts A & B

On the left side of Charts A & B, there should be 1 more gray square. That means rows 2, 4, 6, 8, 10, 12 & 14 should begin with 7 gray squares; row 16 should begin with 8 gray squares; and row 18 should begin with 7 gray squares.

Page 76 Corner to Corner Shawl

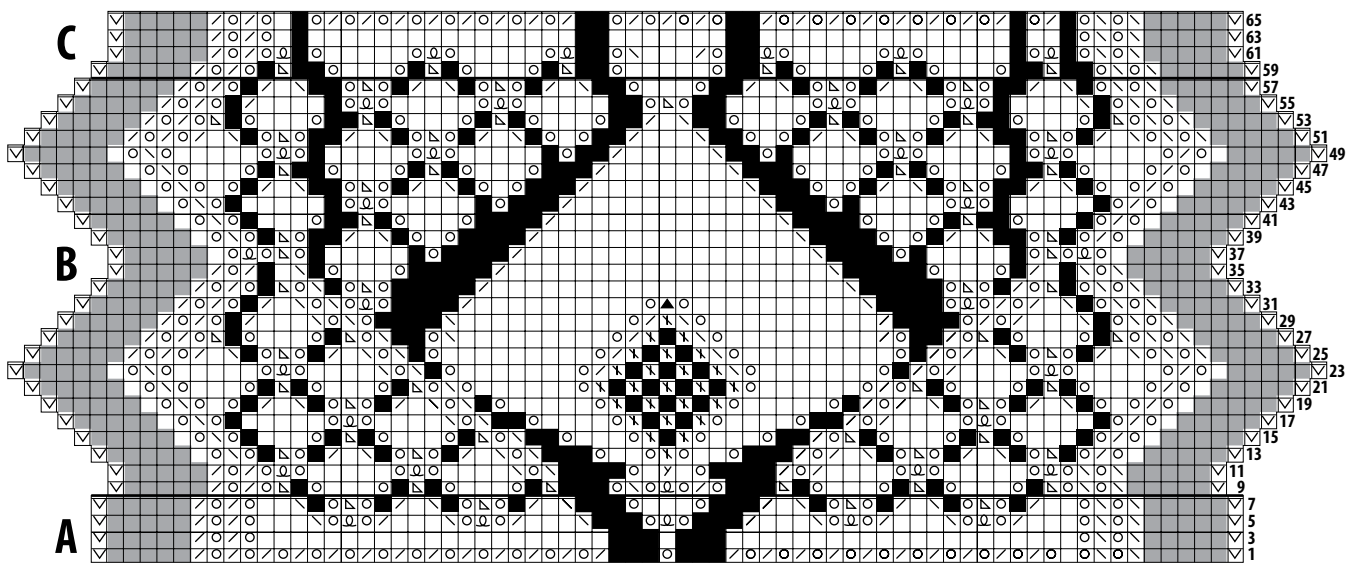
The 3rd line of the paragraph should read:
Cont Chart A through row 136–137 sts.

Chart A

On row 133, the very last SK2P at the left end should be an ssk.

Page 84 Featherweight Fantasy

1/1 LC of the chart key should be 1/1 LT.
See corrected chart below.



Knit
 Slip
 Ssk
 1/1 LT
 K1 through back loop (tbl)
 S2K2P2
 No stitch
 Note: Chart shows RS rows only; p all WS rows.

Purl
 Yo
 K2tog
 SK2P
 K in front and back of st
 'Candlelight' adapted from First Book of Modern Lace Knitting by Marianne Kinzel (Dover).

Fifth Printing

Page 32

The icon in the stitch key for S2KP2 is missing. It is in the Center panel chart.

Page 38

Under Additional shapings, second paragraph needs to read as follows:

Follow chart through Row 65—185 sts.

Then cont working main sections in garter st, dec 1 st at beg and end of each main section every RS row, and working gusset according to chart, AT SAME TIME, work shoulder shapings on WS rows (text eliminated) as foll: Row 90(WS) Work 6-st selvage, k3, [k2tog, k5] 7 times, k17, [k5, k2tog] 7 times, k3, work 6-st selvage—45 sts each main section. 104 (WS) (text eliminated) Work selvage, k1, [k2tog, k3] 6 times, k15, [k3, k2tog] 6 times, k1, work selvage—25 sts each main section. 114 (WS) (text eliminated) Work 4-st selvage, [k1, k2tog] 5 times, k13, [k2tog, k1] 5 times, work 4-st selvage—10 sts each main section...

Same section, third paragraph, first

Next row needs to read as follows.

(WS) K9, k2tog, k8...

Page 39 Right main section Chart

Row 5, 5th square from right edge should be a plain white square.

Row 7, 4th and 5th squares from right edge should be plain white squares.

Row 9, 4th and 5th squares from right edge should be plain white squares.

Row 65, 2nd square from left edge should be k2tog.

Yellow shawl Chart

Row 63, eliminate * at both edges of chart, first and last squares of row need to be plain white.

Row 65, put * at both edges of chart, first right edge square needs to be k2tog, first left edge square needs to be SSK.

Chart Notes Note 2, line two needs to be
...left to right...

Page 58

In other words

Rnd 45

insert , **k1 tbl** before rep from*

Page 69

The written instructions for Chart B, row 15 states “rep from * to last 11 stitches”. This should read “to last 16 stitches”.