



K120

Global Interest

Corrections & Clarifications

for printed version

Do you have a question about a Knitter's pattern? If you've already checked out Knitter's Corrections & Clarifications, then email us at help@xrx-inc.com, and we will do our best to answer it.

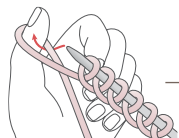
Page 14 'Sunshine at sea'
Use long-tail **loop** cast-on throughout.
See below, or *School*, page 79.

LONG-TAIL LOOP CAST-ON



- 1 Hold needle in left hand and tail of yarn in right hand (allowing about 1" for each stitch to be cast on).
- 2 Bring right index finger under yarn, pointing toward you.
- 3 Turn index finger to point away from you.
- 4 Insert tip of needle under yarn on index finger (see above); remove finger and draw yarn snug, forming a stitch.

Repeat Steps 2–4. After every few stitches, allow the yarn to hang freely to restore its original twist.

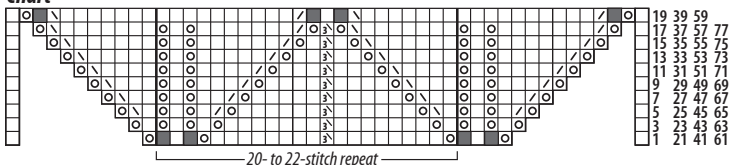


Loops can also be formed over left index finger or thumb.

Page 46 'Rustic Zen' C and D yardages are switched. Yardages should read:
C 225 (250, 275), D 675 (775, 850).

Page 68 'Blue phoenix' Do not work Row 79. End with **Chart Row 77**, then bind off in purl—**407** stitches.
See simplified chart and quote below.

Chart



"Mostly I found this pattern great to work with and enjoyed it very much. It is beautiful. The designer notes were essential. I am a bit new to working exclusively with charts and this was good to begin with.

I'm very excited to finish the shawl and fling it around my shoulders to show it off to all my friends!"

—M. B. from CA